

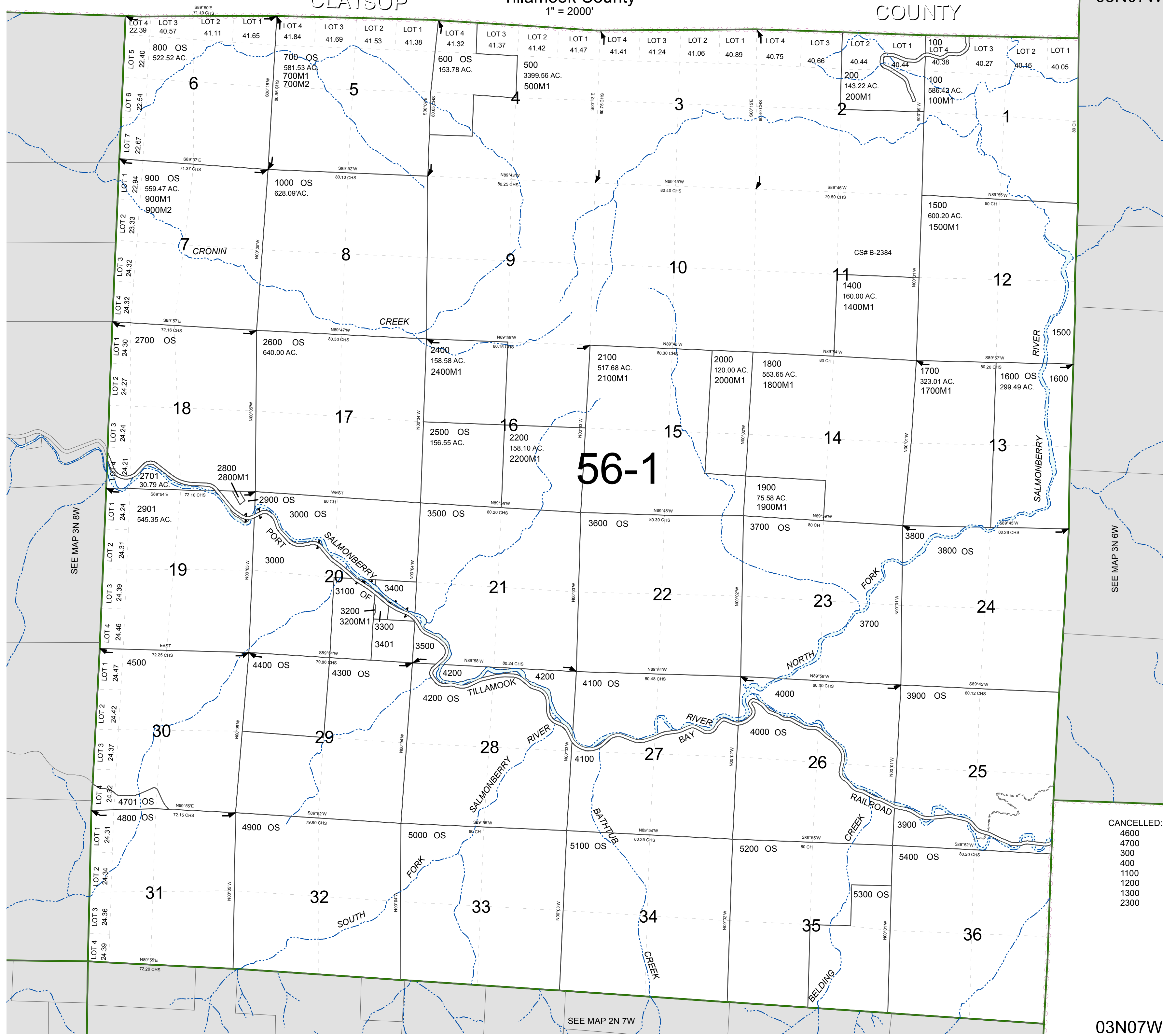
FOR ASSESSMENT AND TAXATION ONLY, NOT SUITABLE FOR LEGAL, ENGINEERING, OR SURVEY PURPOSES

CLATSOP

T.3N. R.7W. W.M.
Tillamook County
1" = 2000'

COUNTY

03N07W



- CANCELLED:
- 4600
 - 4700
 - 300
 - 400
 - 1100
 - 1200
 - 1300
 - 2300

03N07W
REVISED 9/17/15, WS