

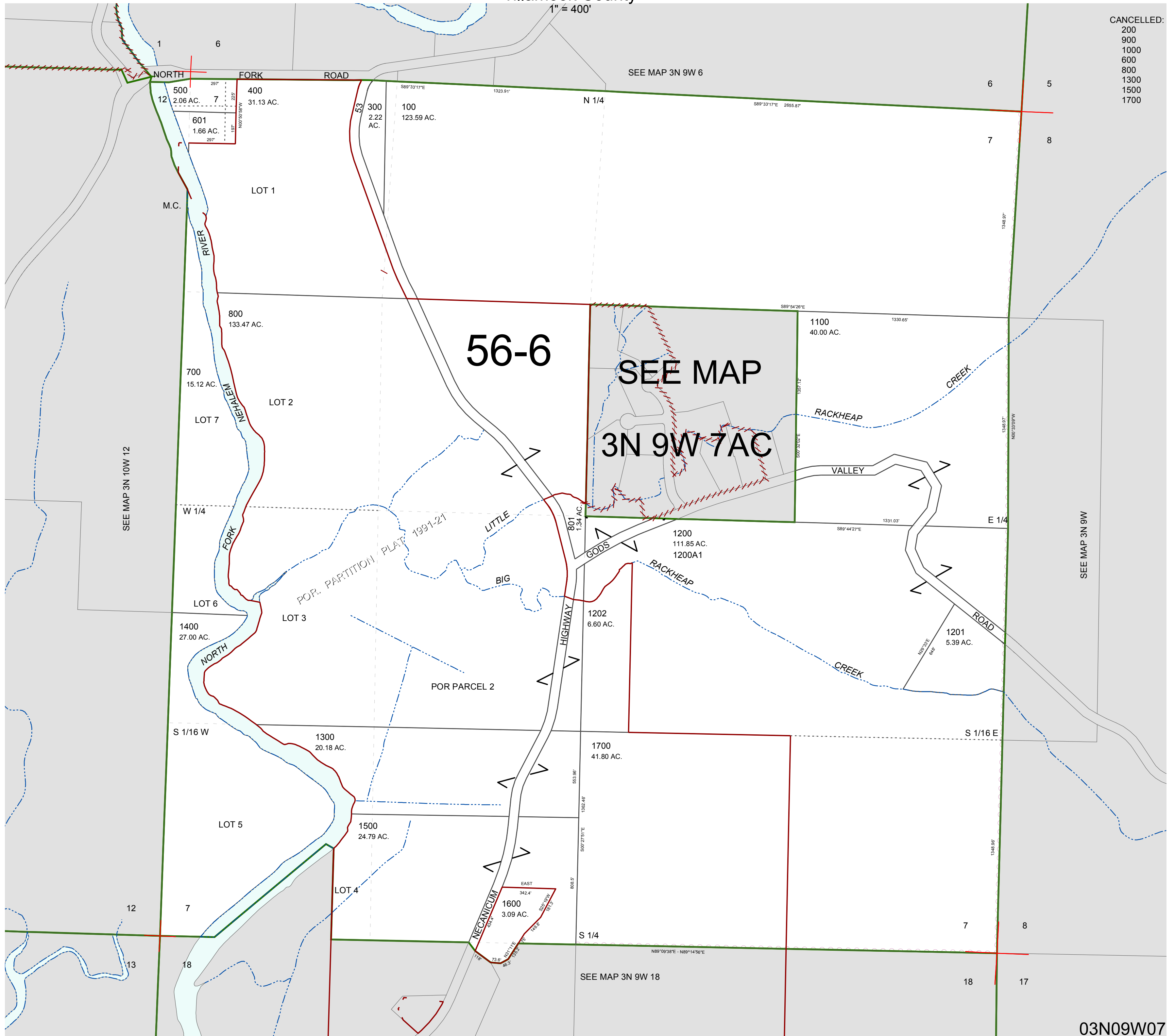
FOR ASSESSMENT AND TAXATION ONLY. NOT SUITABLE FOR LEGAL, ENGINEERING, OR SURVEY PURPOSES

SECTION 7 T.3N. R.9W. W.M.
Tillamook County

03N09W07

1" = 400'

- CANCELLED:
- 200
- 900
- 1000
- 600
- 800
- 1300
- 1500
- 1700



03N09W07
REVISED 6/05/15, WS