

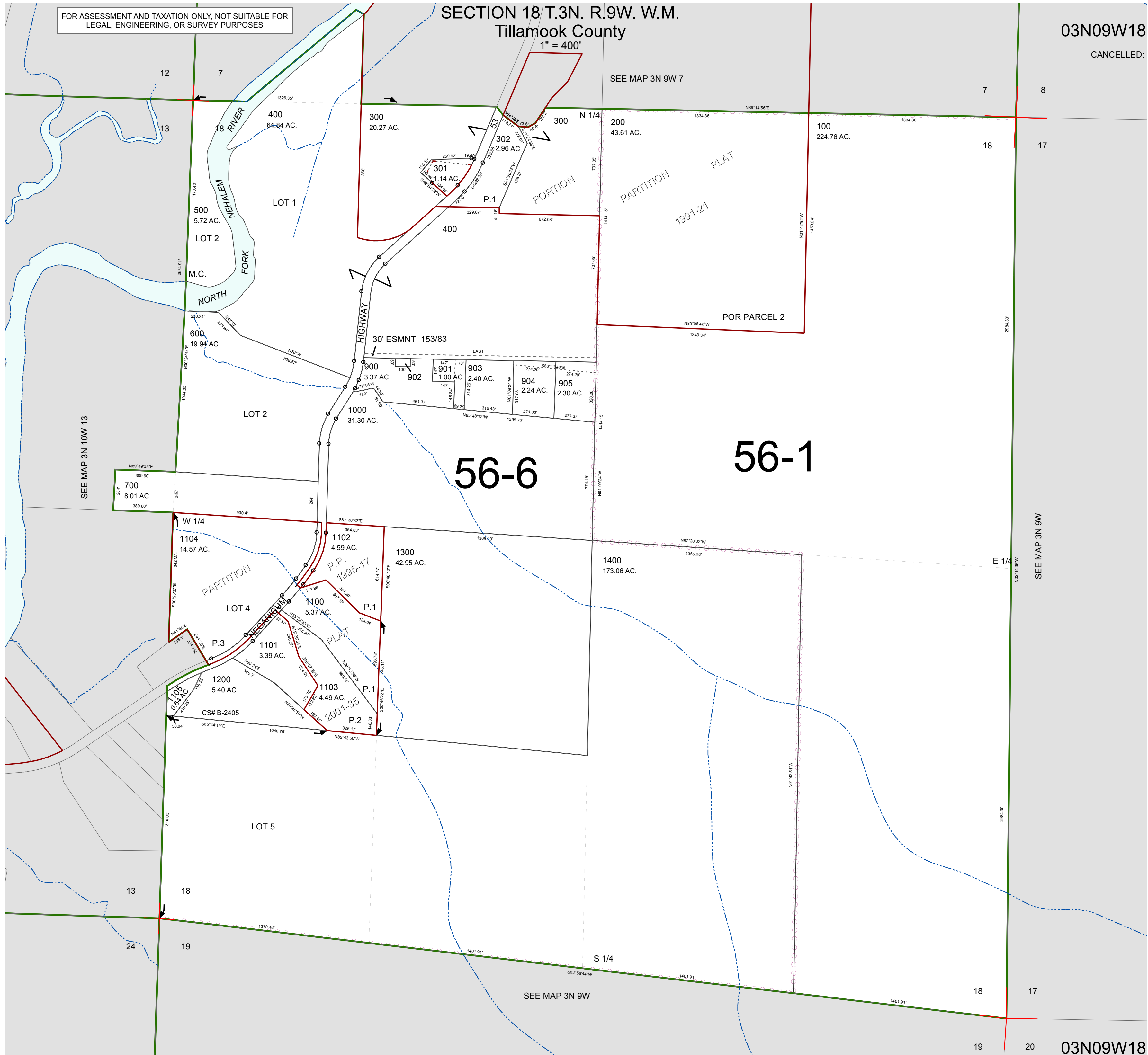
FOR ASSESSMENT AND TAXATION ONLY, NOT SUITABLE FOR LEGAL, ENGINEERING, OR SURVEY PURPOSES

SECTION 18 T.3N. R.9W. W.M.
Tillamook County

1" = 400'

03N09W18

CANCELLED:



SEE MAP 3N 9W 7

SEE MAP 3N 10W 13

SEE MAP 3N 9W

SEE MAP 3N 9W

03N09W18

REVISED 6/05/15, WS