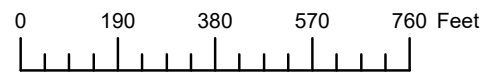


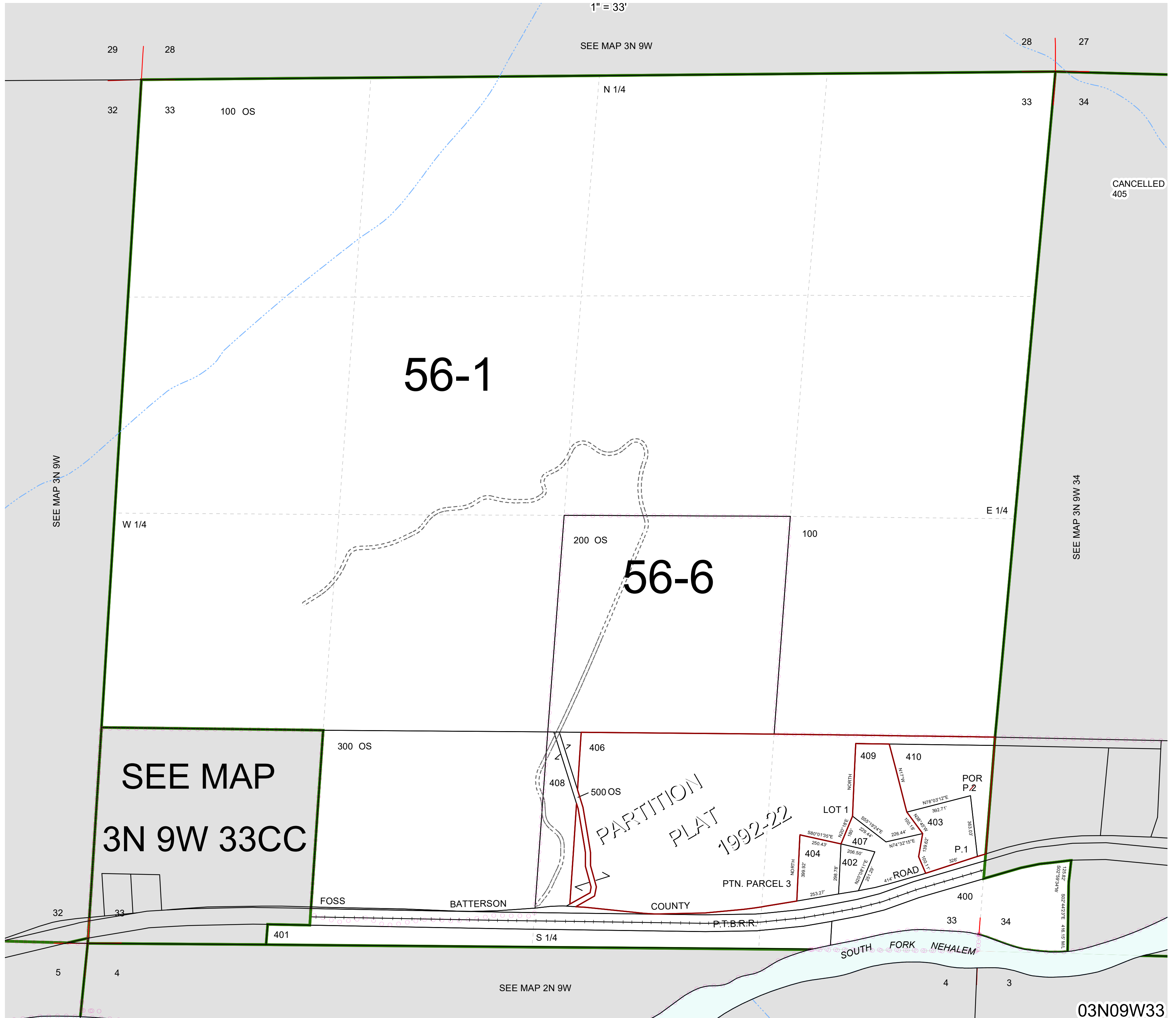
THIS MAP WAS PREPARED FOR ASSESSMENT PURPOSE ONLY



SECTION 33 T.3N. R.9W. W.M.
TILLAMOOK COUNTY

03N09W33

1" = 33'



CANCELLED
405

SEE MAP 3N 9W 34

03N09W33

Revised 8/12/22, WS