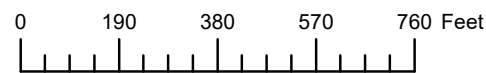


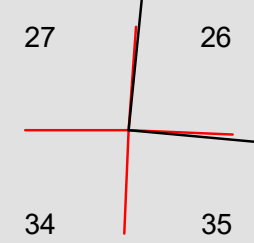
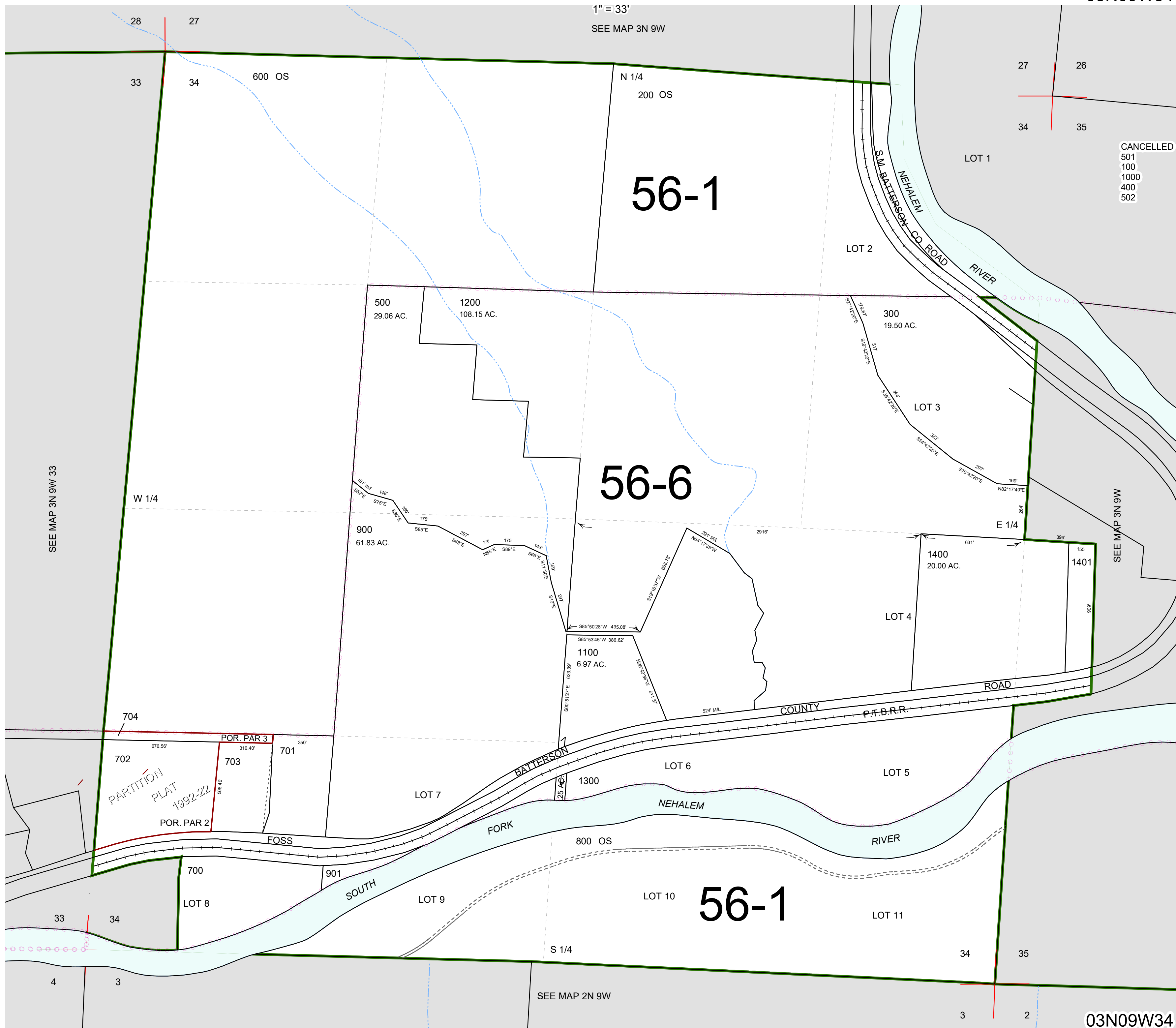
THIS MAP WAS PREPARED FOR ASSESSMENT PURPOSE ONLY



SECTION 34 T.3N. R.9W. W.M.  
TILLAMOOK COUNTY

03N09W34

1" = 33'  
SEE MAP 3N 9W



CANCELLED  
501  
100  
1000  
400  
502

SEE MAP 3N 9W 33

SEE MAP 3N 9W

SEE MAP 2N 9W

03N09W34  
Revised 8/12/22, WS