

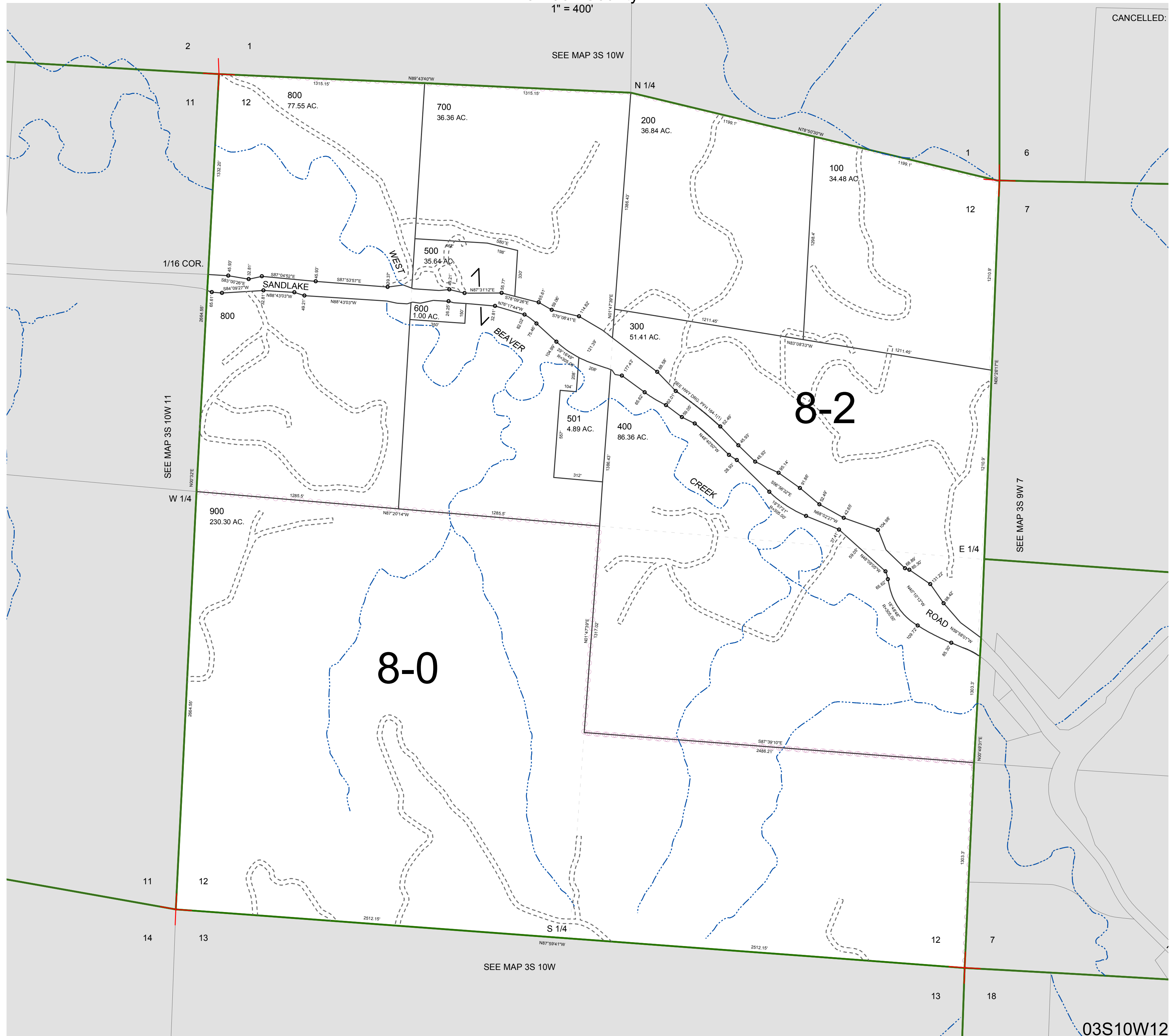
FOR ASSESSMENT AND TAXATION ONLY, NOT SUITABLE FOR LEGAL, ENGINEERING, OR SURVEY PURPOSES

SECTION 12 T.3S. R.10W. W.M.  
Tillamook County

1" = 400'

03S10W12

CANCELLED:



03S10W12

REVISED 6/16/17, WS