

FOR ASSESSMENT AND TAXATION ONLY, NOT SUITABLE FOR LEGAL, ENGINEERING, OR SURVEY PURPOSES

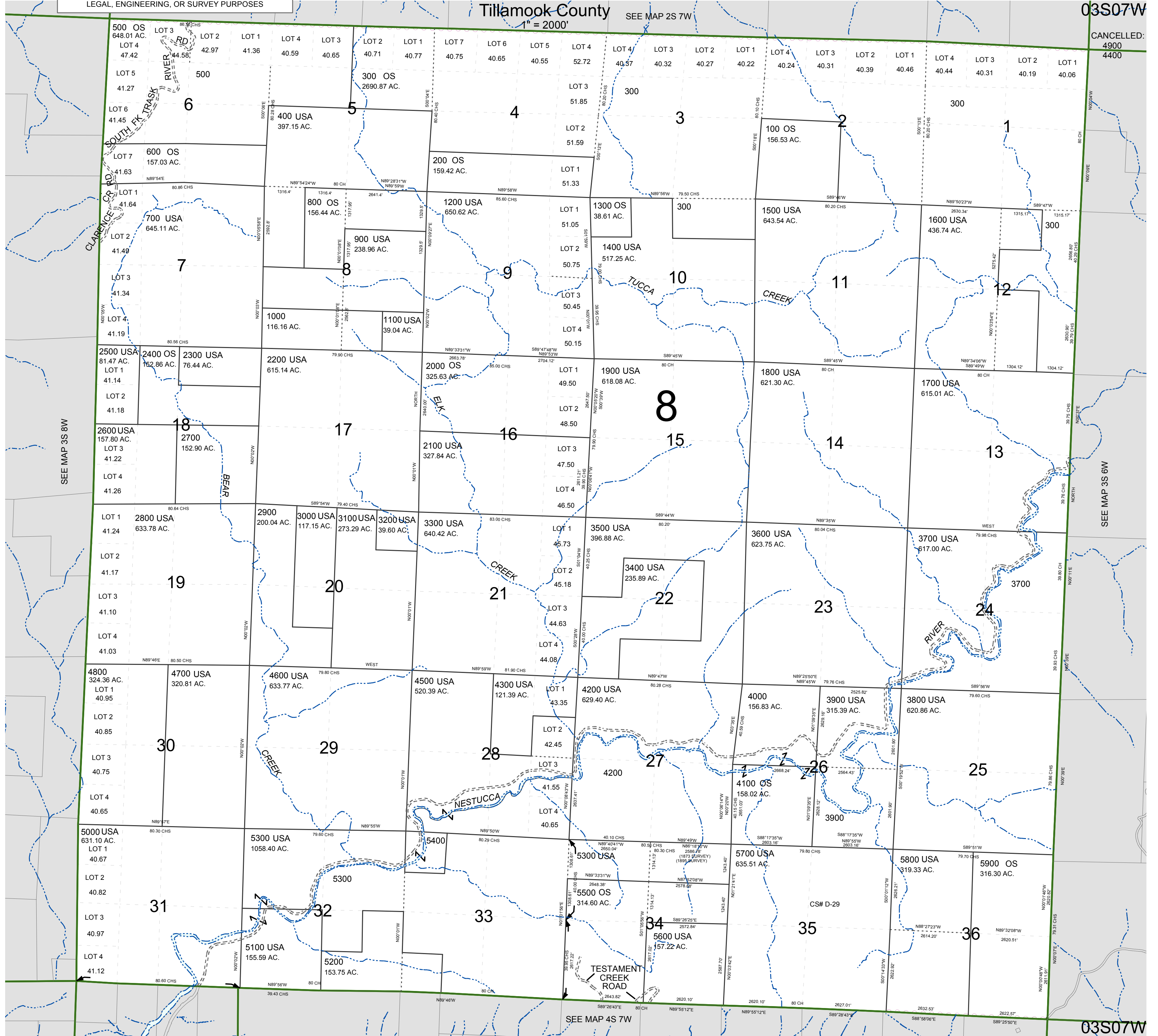
T.3S. R.7W. W.M.
Tillamook County

1" = 2000'

SEE MAP 2S 7W

03S07W

CANCELLED:
4900
4400



03S07W

REVISED 6/16/17, WS