

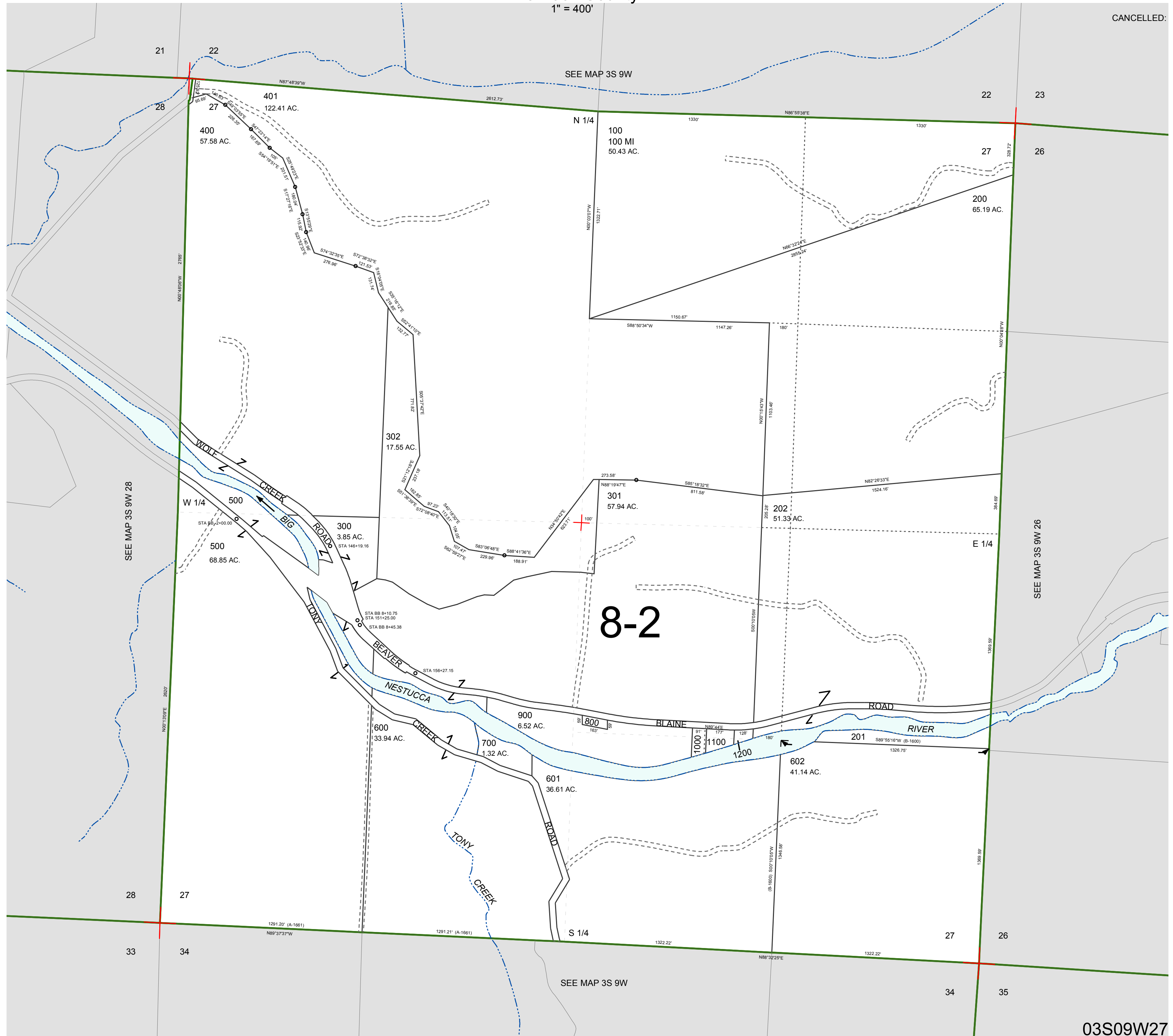
FOR ASSESSMENT AND TAXATION ONLY, NOT SUITABLE FOR LEGAL, ENGINEERING, OR SURVEY PURPOSES

SECTION 27 T.3S. R.9W. W.M.
Tillamook County

03S09W27

CANCELLED:

1" = 400'



03S09W27

REVISED 6/16/17, WS