

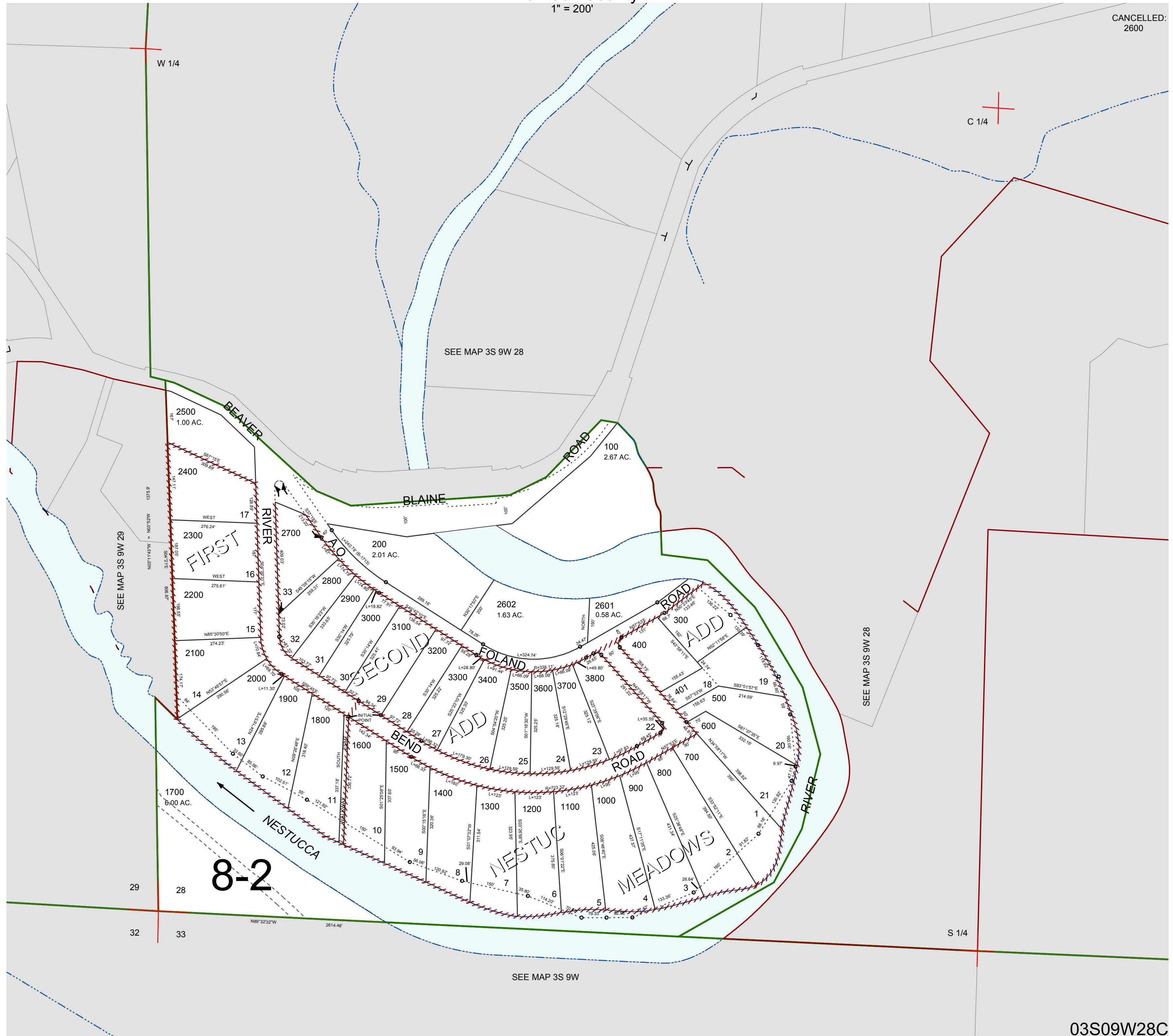
FOR ASSESSMENT AND TAXATION ONLY, NOT SUITABLE FOR LEGAL, ENGINEERING, OR SURVEY PURPOSES

S.W.1/4 SEC.28 T.3S. R.9W. W.M.
Tillamook County

03S09W28C

1" = 200'

CANCELLED:
2600



03S09W28C
REVISED 6/16/17, WS