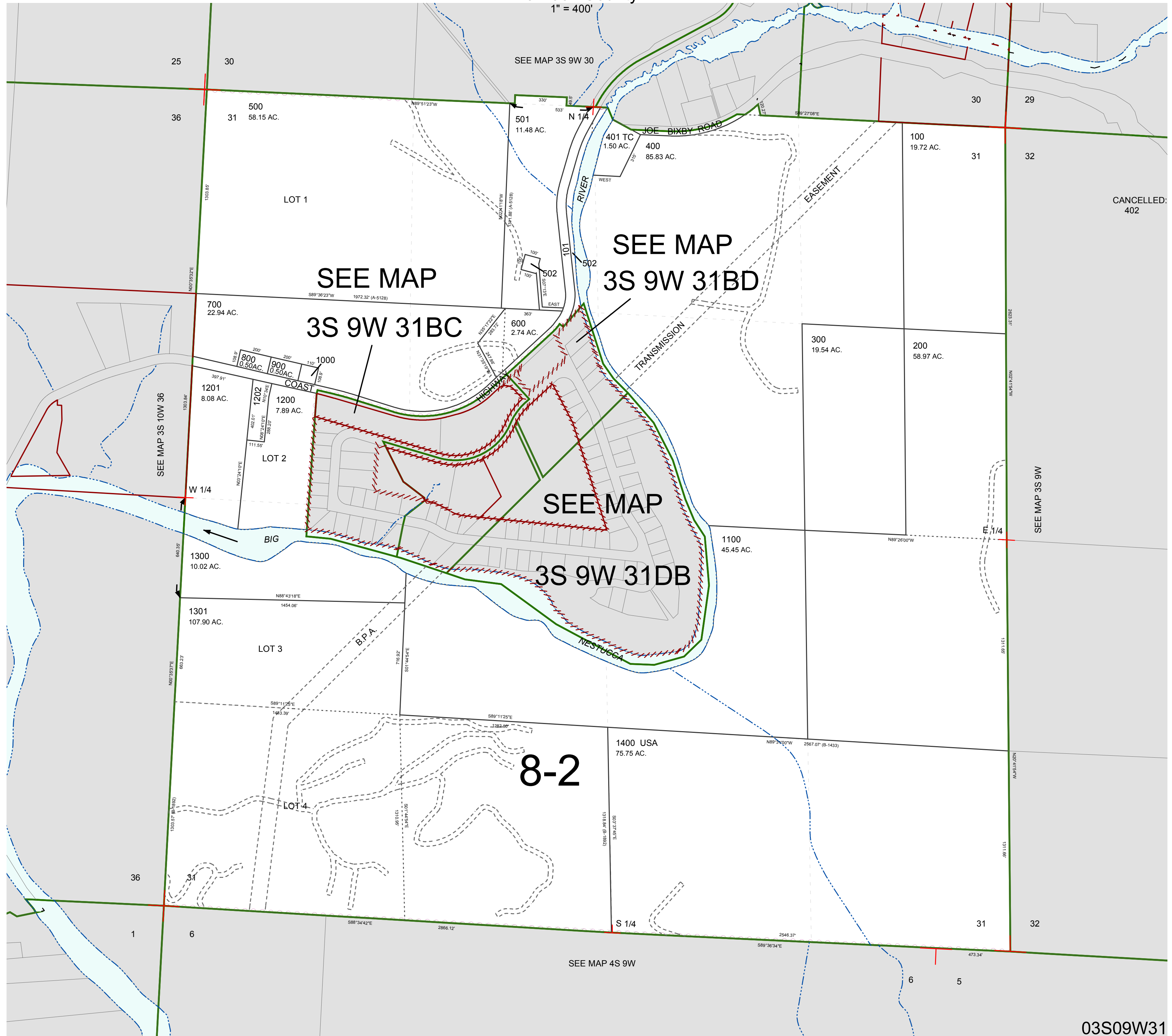


FOR ASSESSMENT AND TAXATION ONLY, NOT SUITABLE FOR LEGAL, ENGINEERING, OR SURVEY PURPOSES

SECTION 31 T.3S. R.9W. W.M.  
Tillamook County

03S09W31

1" = 400'



CANCELLED  
402

03S09W31  
REVISED 6/16/17, WS