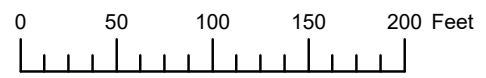


THIS MAP WAS PREPARED FOR ASSESSMENT PURPOSE ONLY

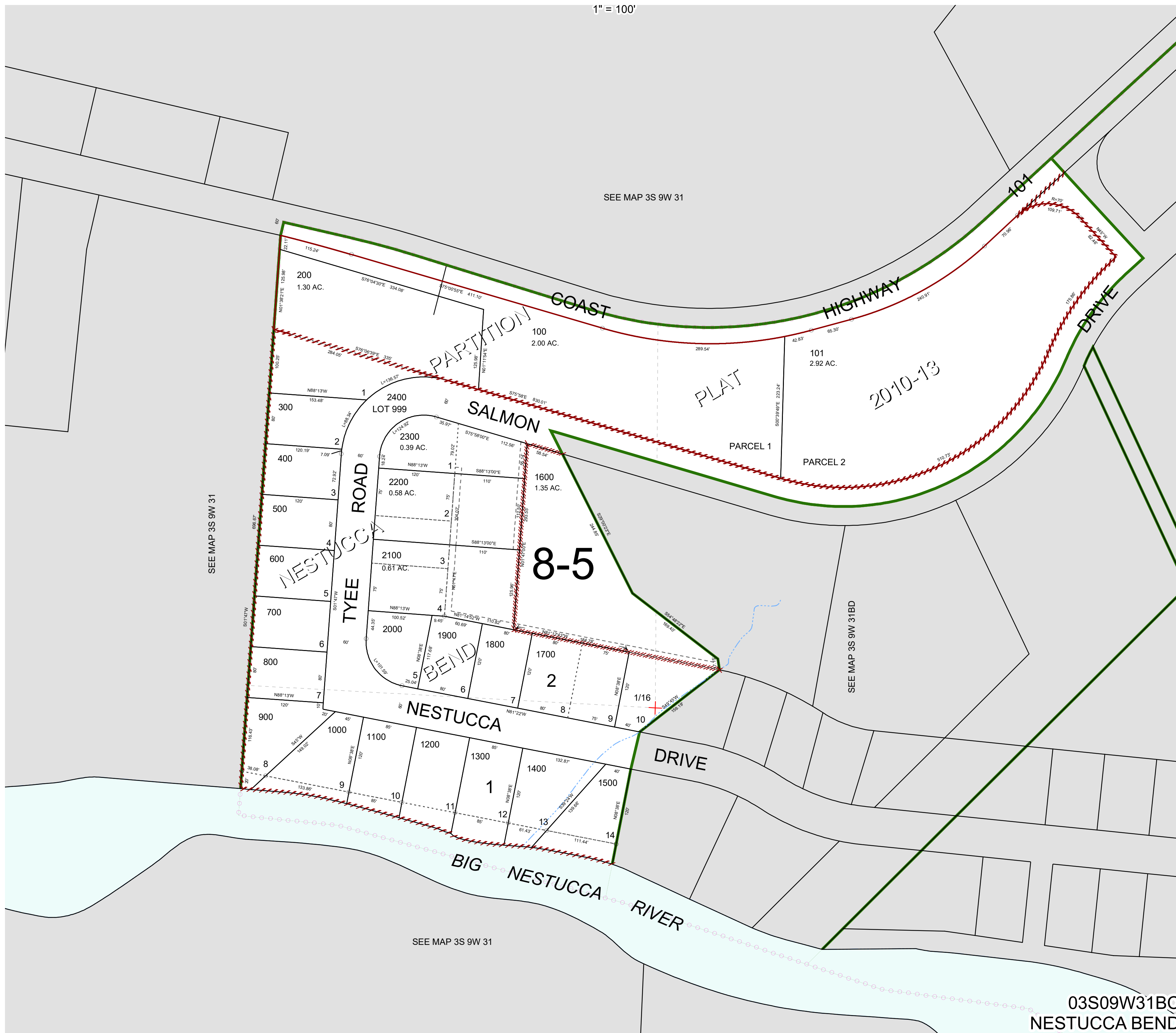


S.W.1/4 N.W.1/4 SEC.31 T.3S. R.9W. W.M.

TILLAMOOK COUNTY

1" = 100'

03S09W31BC
NESTUCCA BEND



SEE MAP 3S 9W 31

03S09W31BC
NESTUCCA BEND

Revised 5/11/22, WS