

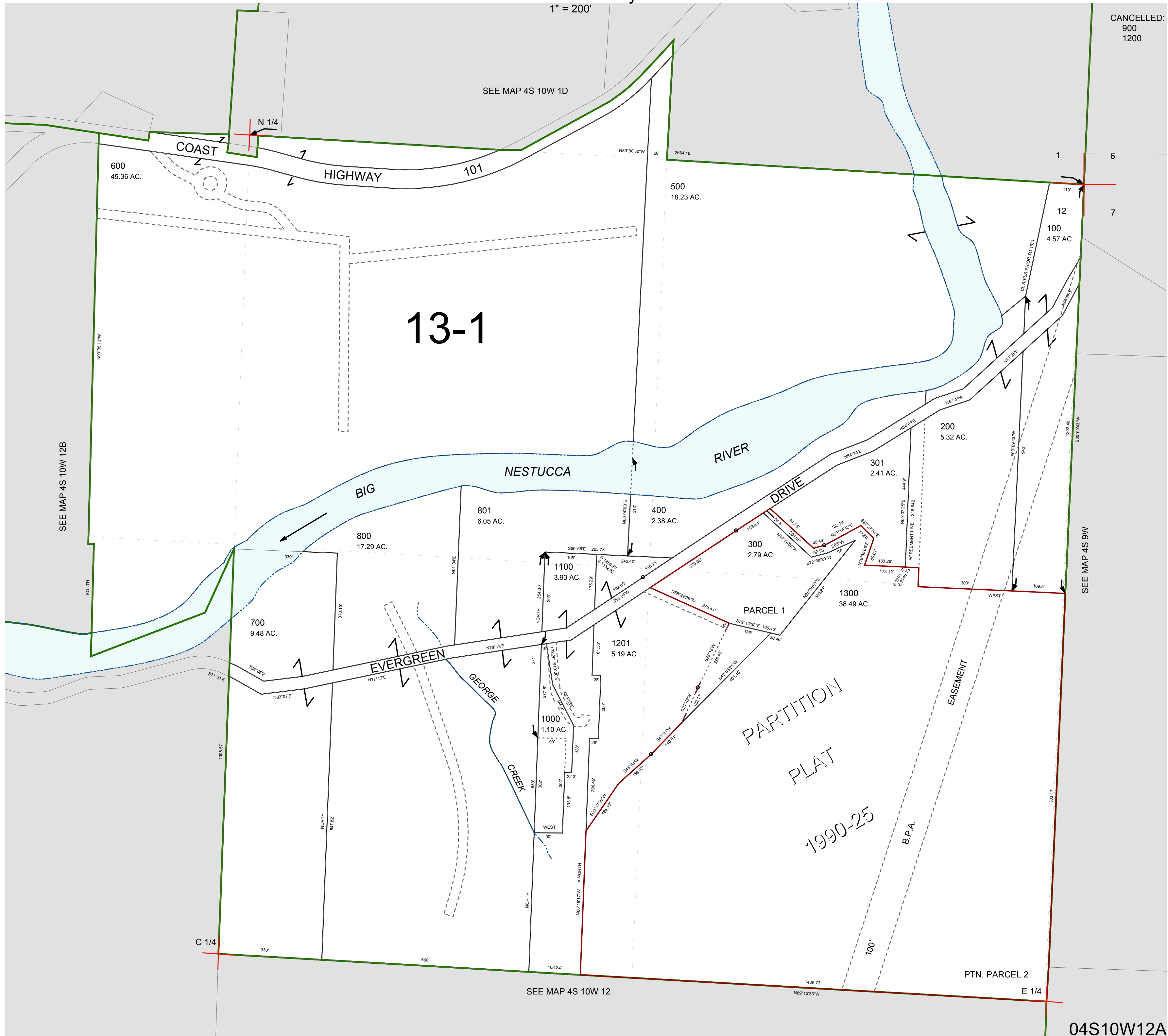
FOR ASSESSMENT AND TAXATION ONLY, NOT SUITABLE FOR LEGAL, ENGINEERING, OR SURVEY PURPOSES

N.E. 1/4 SEC. 12 T. 4S. R. 10W. W.M.
Tillamook County

1" = 200'

04S10W12A

CANCELLED:
900
1200



04S10W12A
REVISED 8/29/17, WS