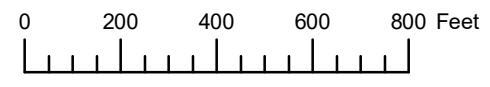


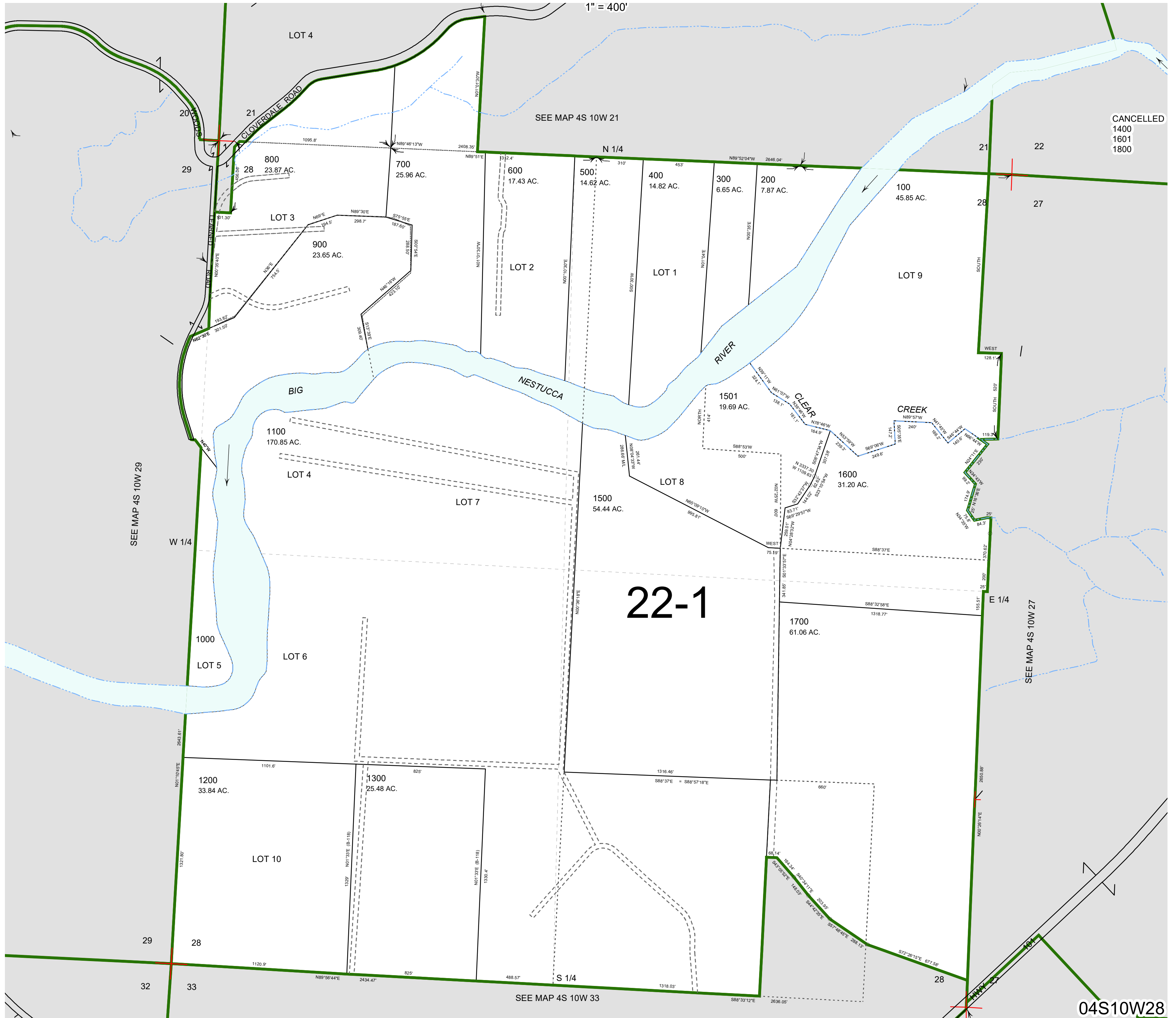
THIS MAP WAS PREPARED FOR ASSESSMENT PURPOSE ONLY



SECTION 28 T.4S. R.10W. W.M.  
TILLAMOOK COUNTY

04S10W28

1" = 400'



CANCELLED  
1400  
1601  
1800

22-1

04S10W28

Revised 08/07/20, WS