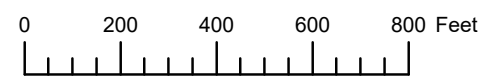


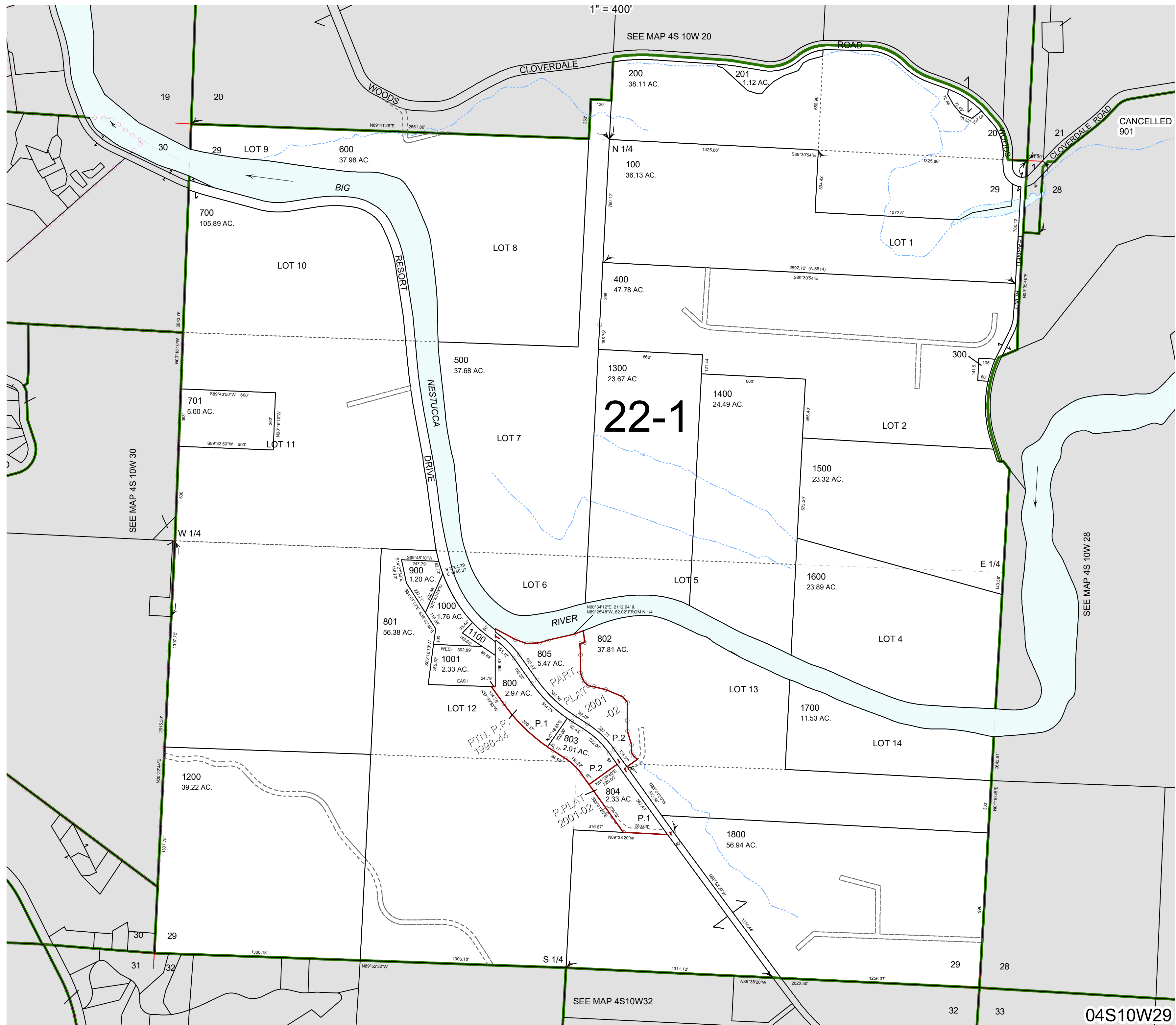
THIS MAP WAS PREPARED FOR ASSESSMENT PURPOSE ONLY



SECTION 29 T.4S. R.10W. W.M.

TILLAMOOK COUNTY

04S10W29



1" = 400'

SEE MAP 4S 10W 20

CANCELLED 901

SEE MAP 4S 10W 30

SEE MAP 4S 10W 28

SEE MAP 4S10W32

04S10W29

Revised 4/28/23, WS