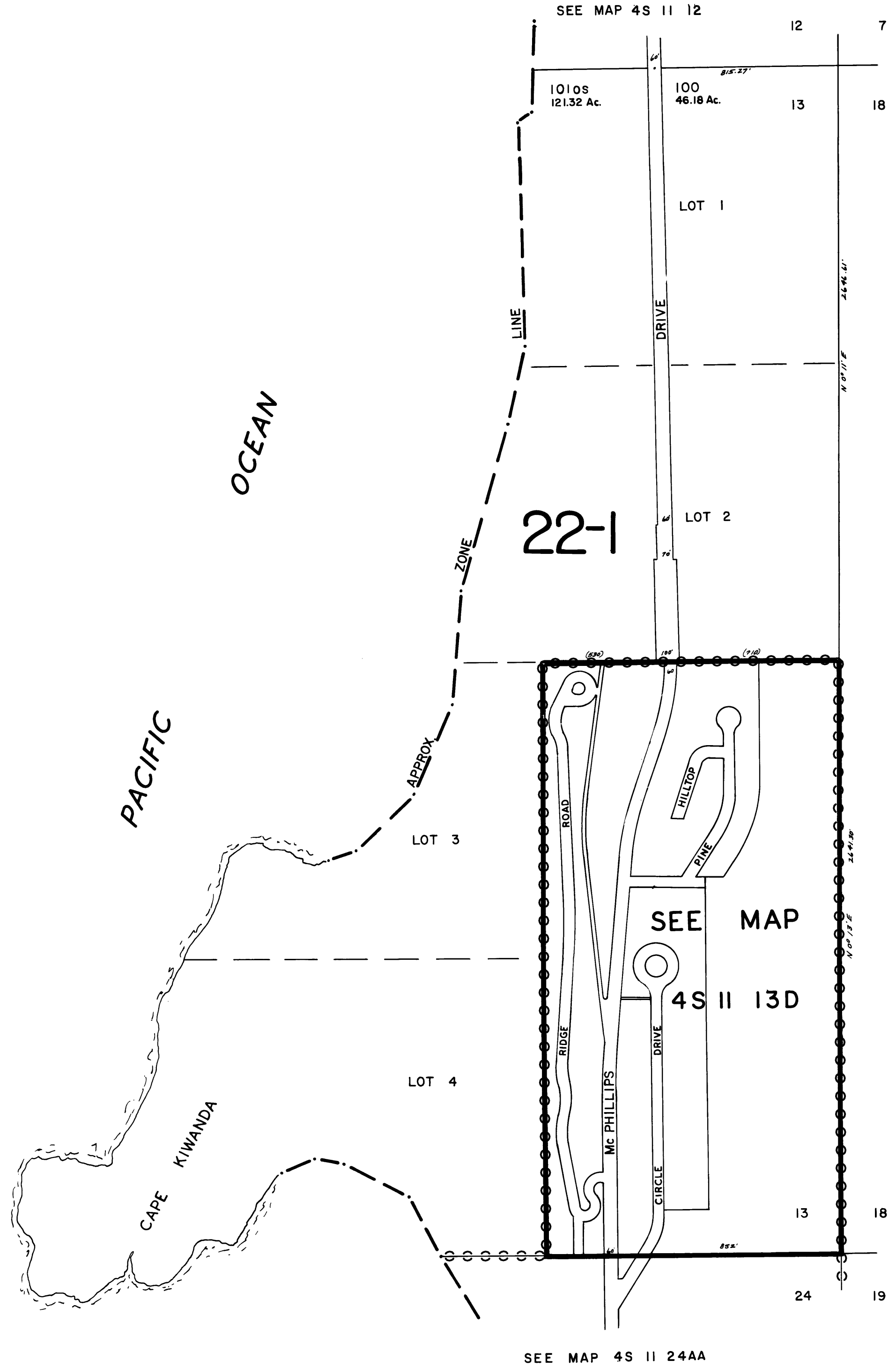


THIS MAP WAS PREPARED FOR
ASSESSMENT PURPOSE ONLY

SECTION 13 T.4S. R.II.W. W.M.
TILLAMOOK COUNTY

1" = 400'

4S 11 13
& INDEX



SEE MAP 4S 10 18

4S 11 13
& INDEX

REVISED 5-20-98, 9C