

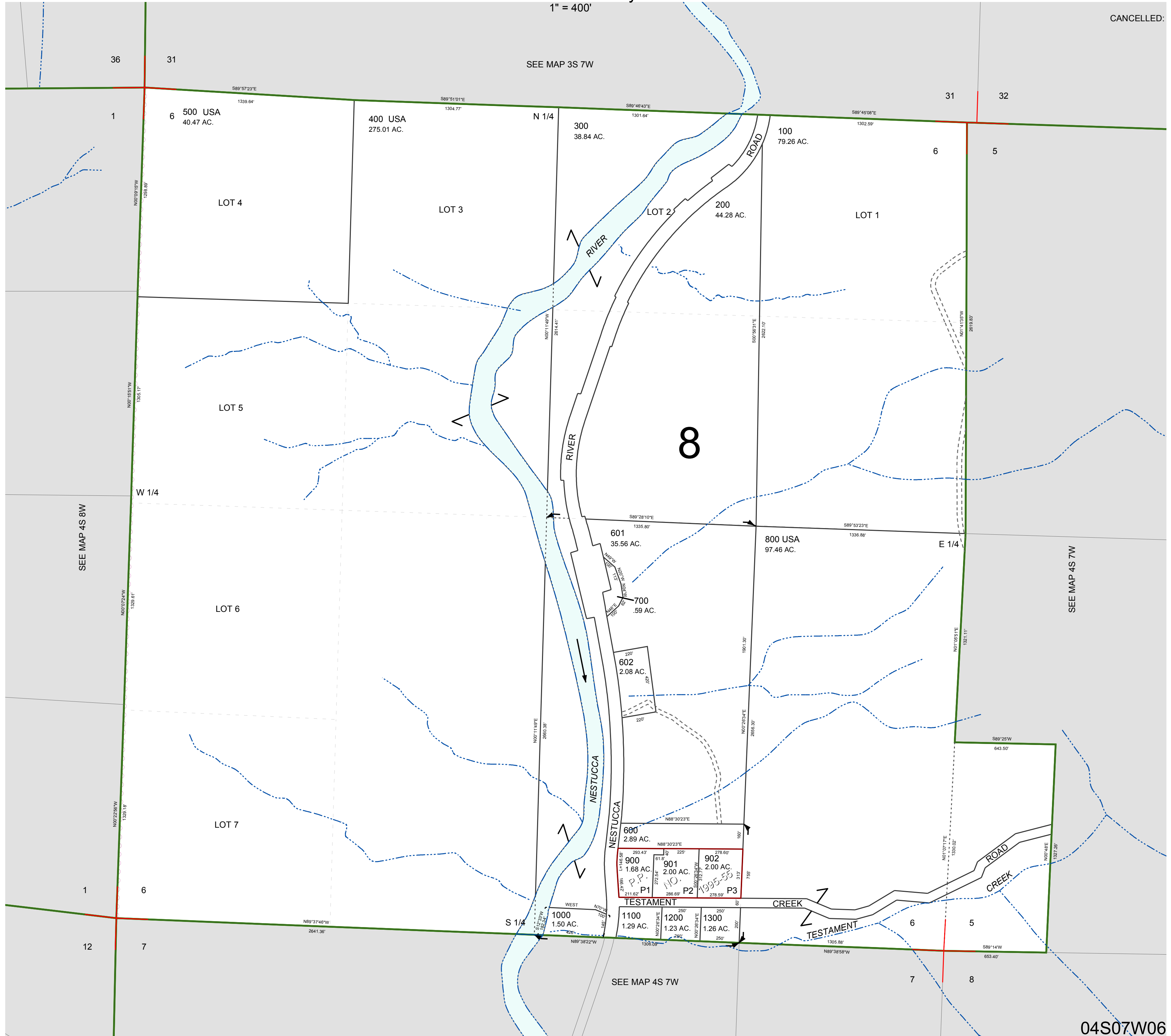
FOR ASSESSMENT AND TAXATION ONLY, NOT SUITABLE FOR LEGAL, ENGINEERING, OR SURVEY PURPOSES

SECTION 6 T.4S. R.7W. W.M.
Tillamook County

1" = 400'

04S07W06

CANCELLED:



04S07W06
REVISED 6/16/17, WS