

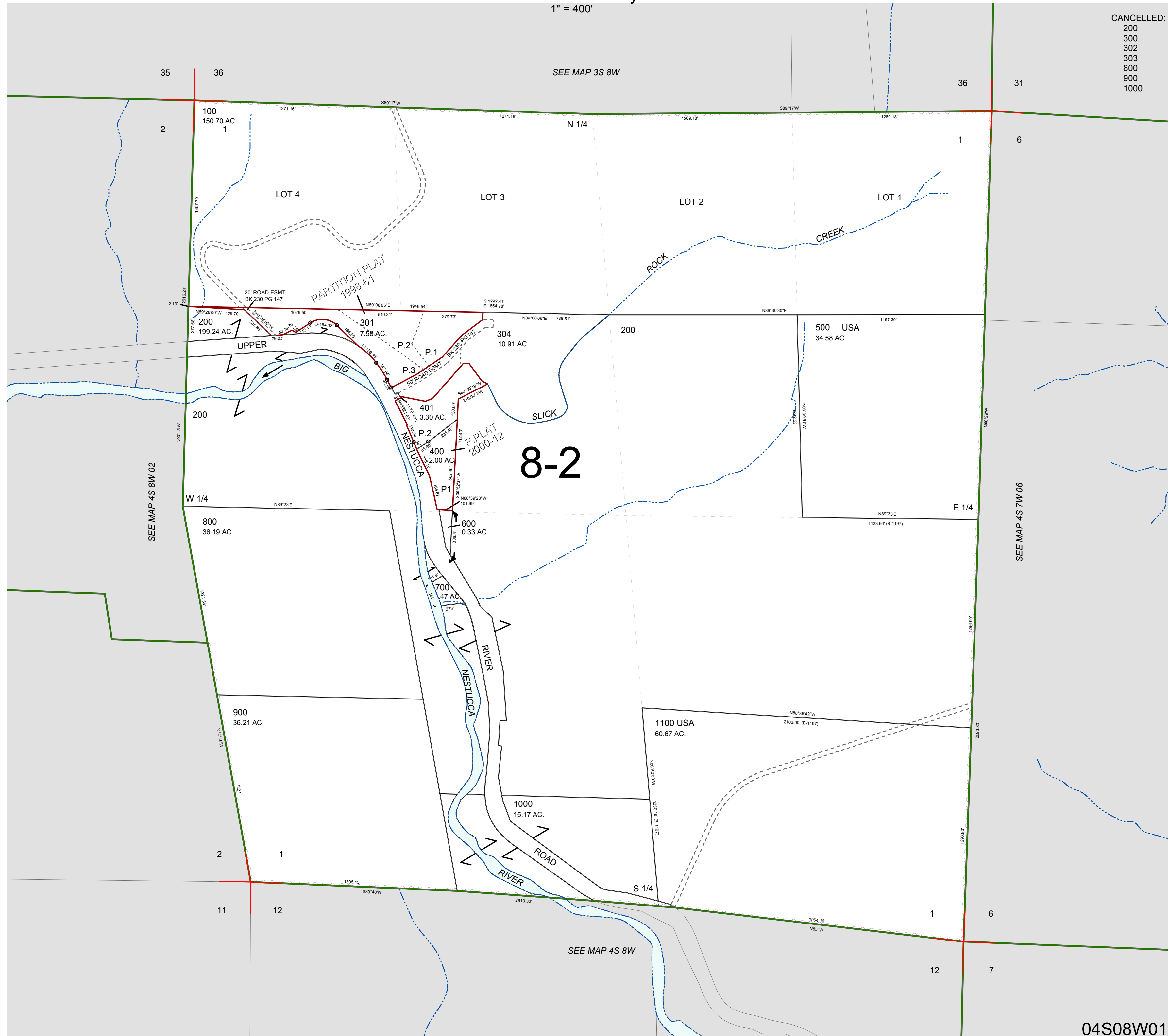
FOR ASSESSMENT AND TAXATION ONLY, NOT SUITABLE FOR LEGAL, ENGINEERING, OR SURVEY PURPOSES

SECTION 1 T.4S. R.8W. W.M.
Tillamook County

1" = 400'

04S08W01

CANCELLED:
200
300
302
303
800
900
1000



8-2

04S08W01
REVISED 6/16/17, WS