

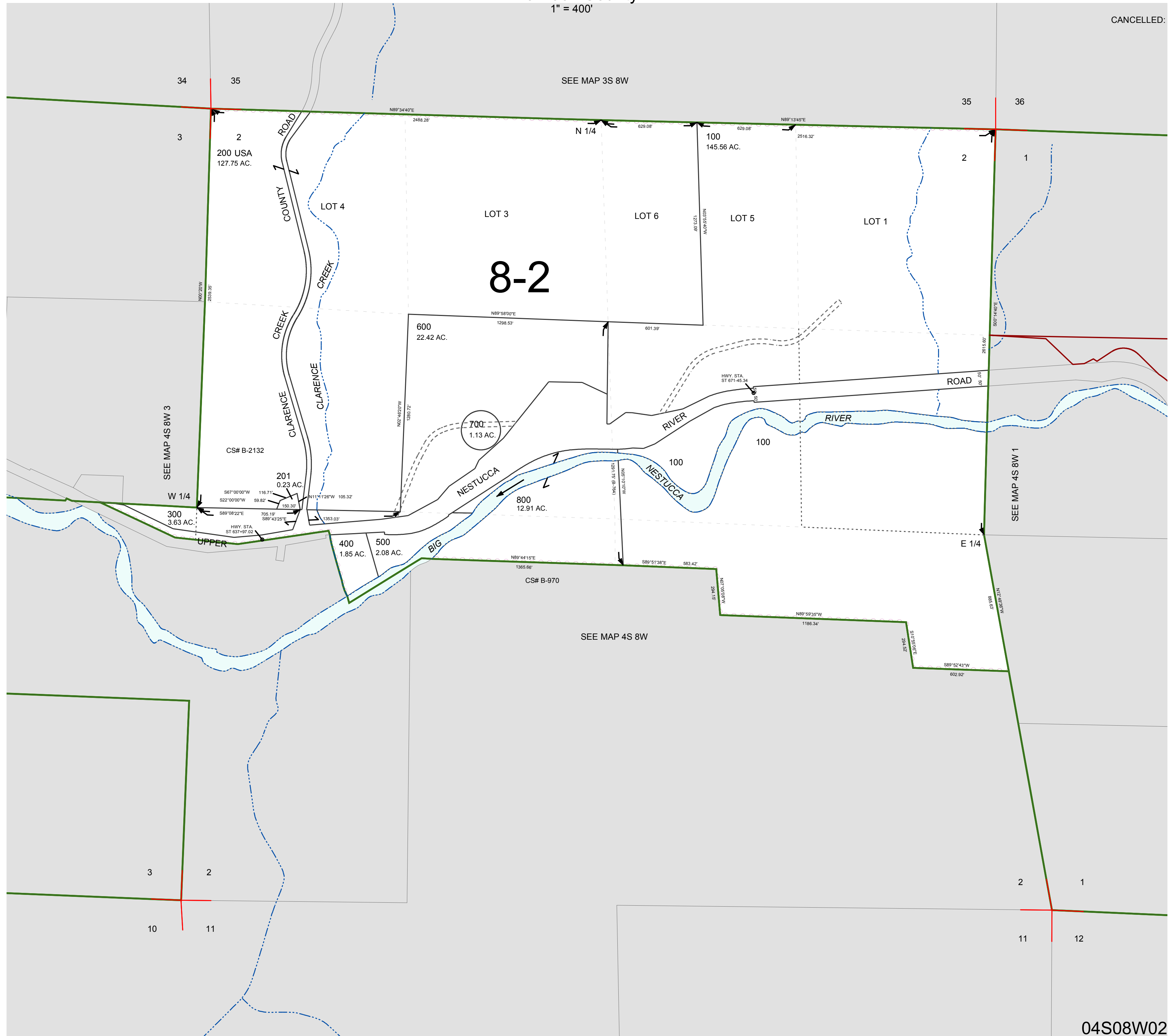
FOR ASSESSMENT AND TAXATION ONLY, NOT SUITABLE FOR  
LEGAL, ENGINEERING, OR SURVEY PURPOSES

SECTION 2 T.4S. R.8W. W.M.  
Tillamook County

1" = 400'

04S08W02

CANCELLED:



04S08W02  
REVISED 6/16/17, WS