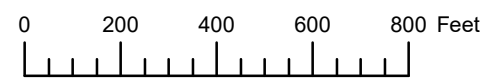


THIS MAP WAS PREPARED FOR ASSESSMENT PURPOSE ONLY

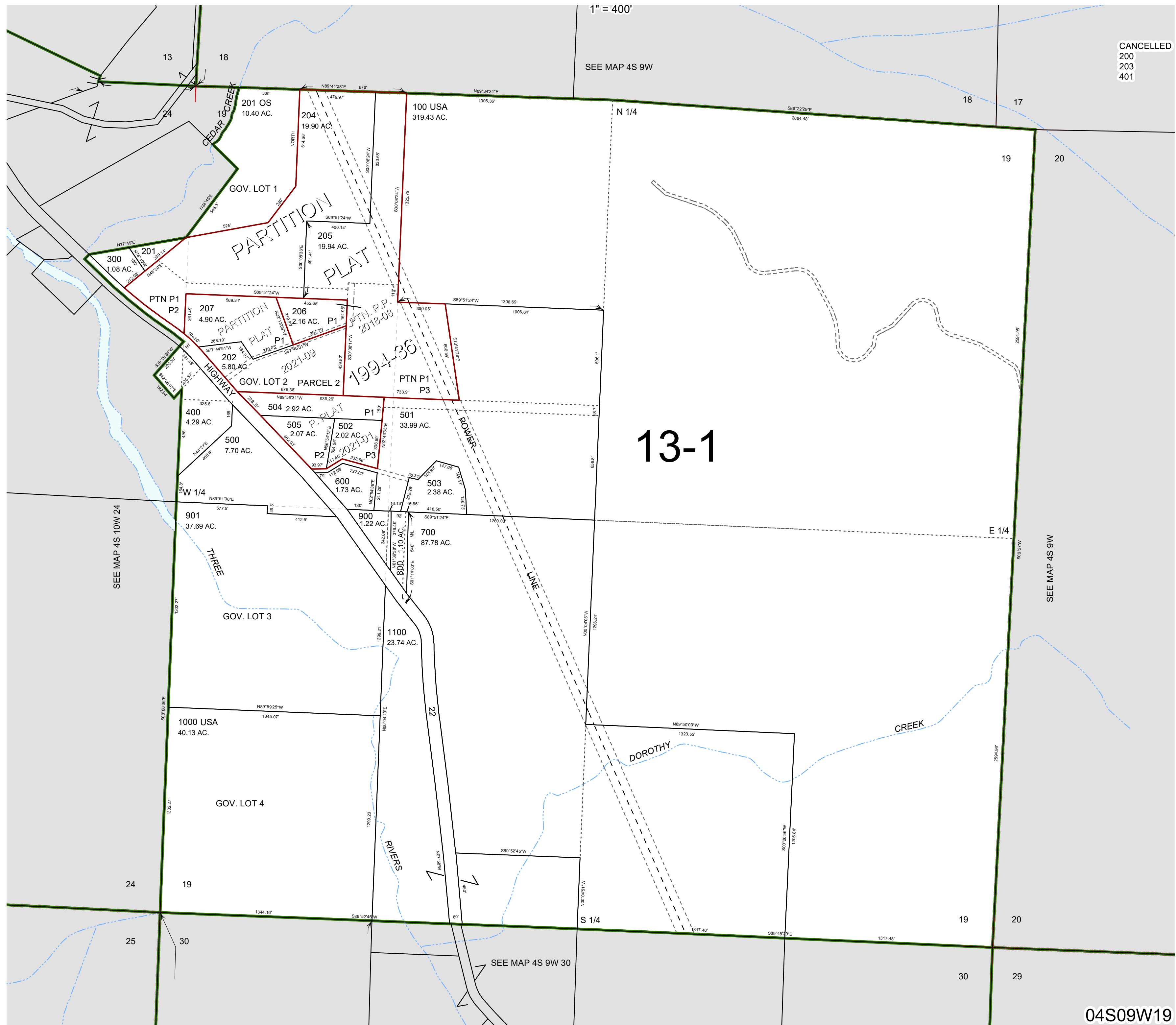


SECTION 19 T.4S. R.9W. W.M.
TILLAMOOK COUNTY

04S09W19

1" = 400'

CANCELLED
200
203
401



13-1

SEE MAP 4S 10W 24

SEE MAP 4S 9W

SEE MAP 4S 9W 30

04S09W19

Revised 07/15/21, WS