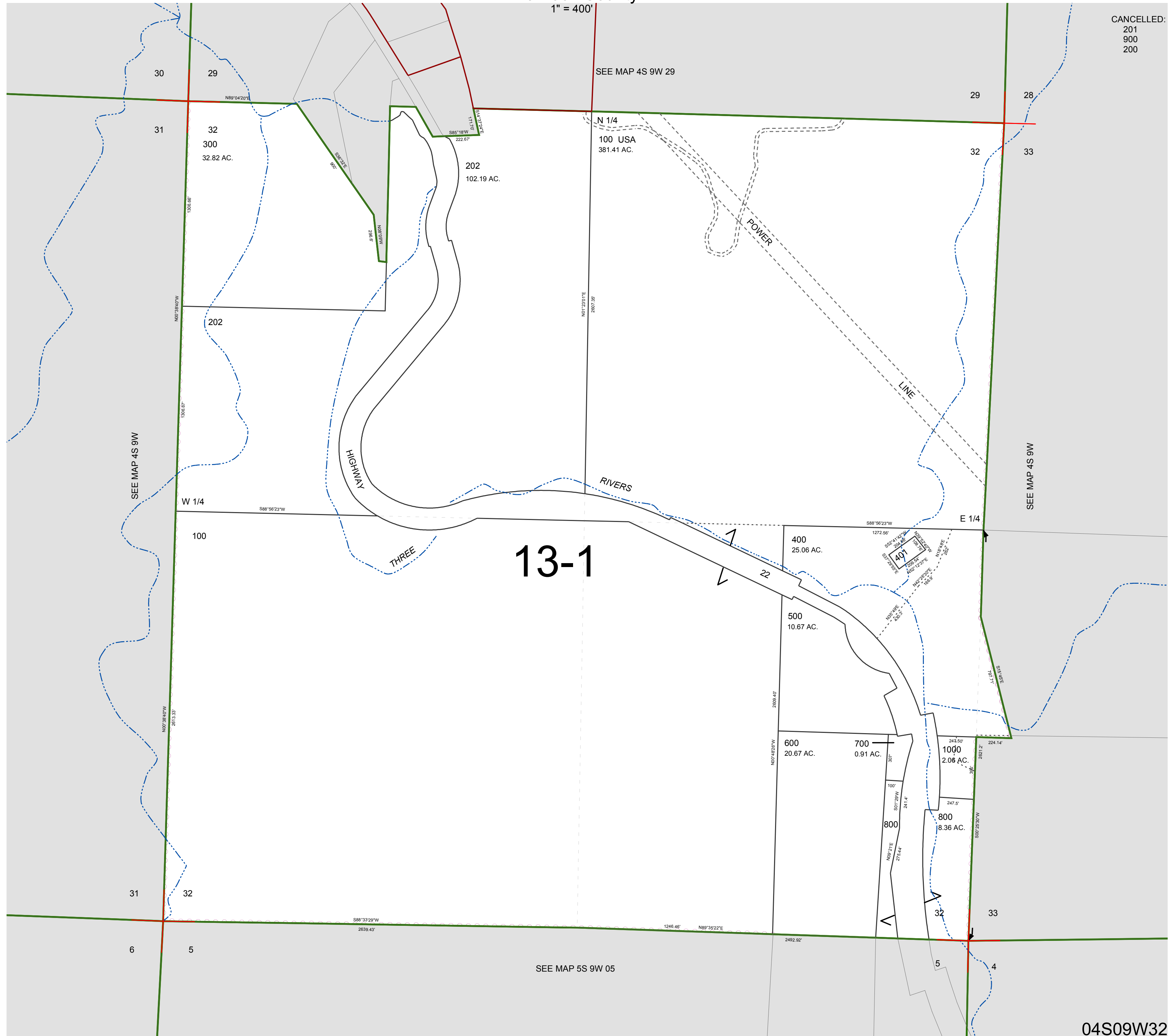


FOR ASSESSMENT AND TAXATION ONLY, NOT SUITABLE FOR LEGAL, ENGINEERING, OR SURVEY PURPOSES

SECTION 32 T.4S. R.9W. W.M.
Tillamook County

04S09W32

CANCELLED:
201
900
200



04S09W32
REVISED 6/16/17, WS