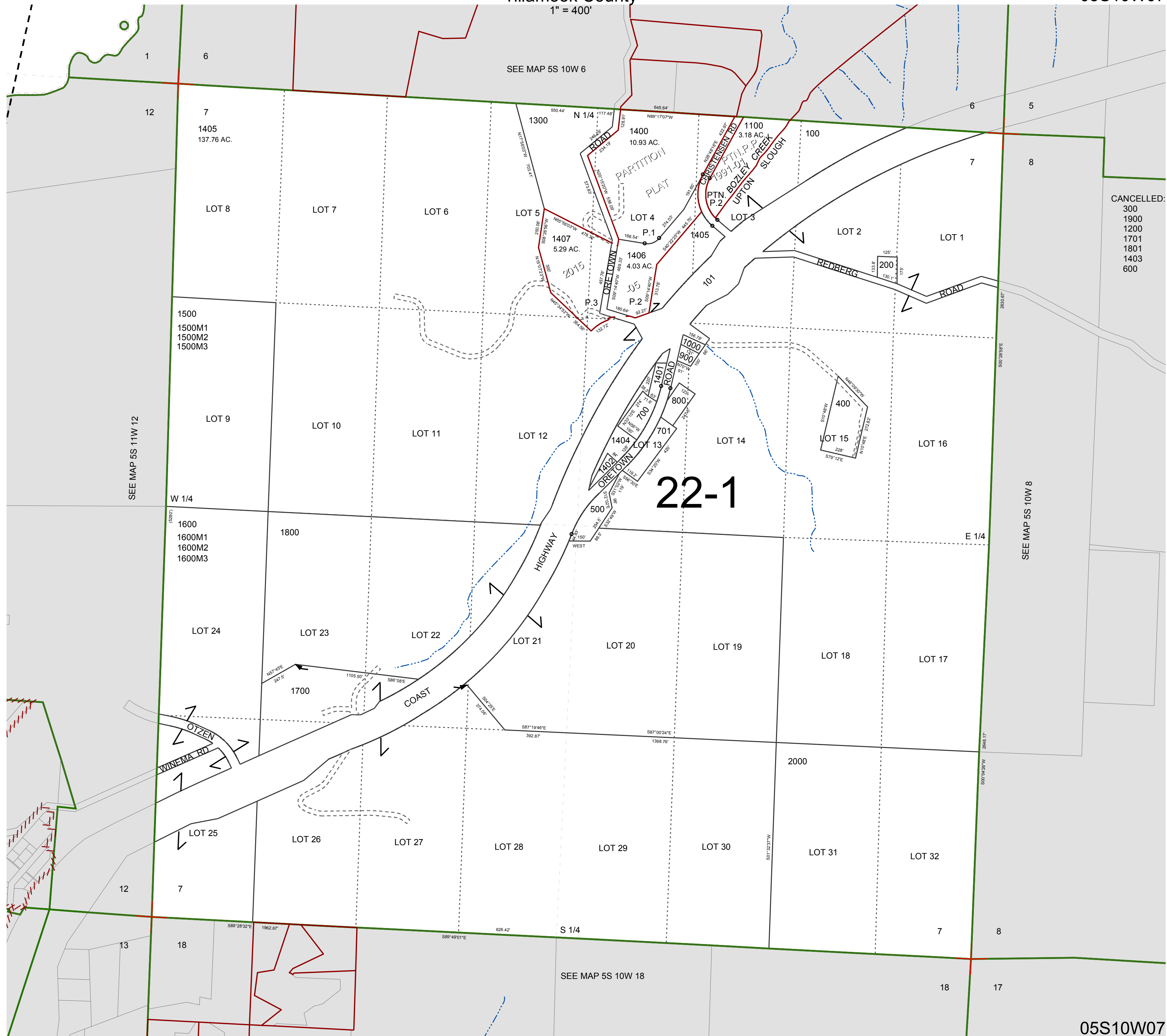


FOR ASSESSMENT AND TAXATION ONLY, NOT SUITABLE FOR LEGAL, ENGINEERING, OR SURVEY PURPOSES

SECTION 7 T.5S. R.10W. W.M.
Tillamook County

05S10W07

1" = 400'



CANCELLED:
 300
 1900
 1200
 1701
 1801
 1403
 600

05S10W07
REVISED 6/16/17, WS