

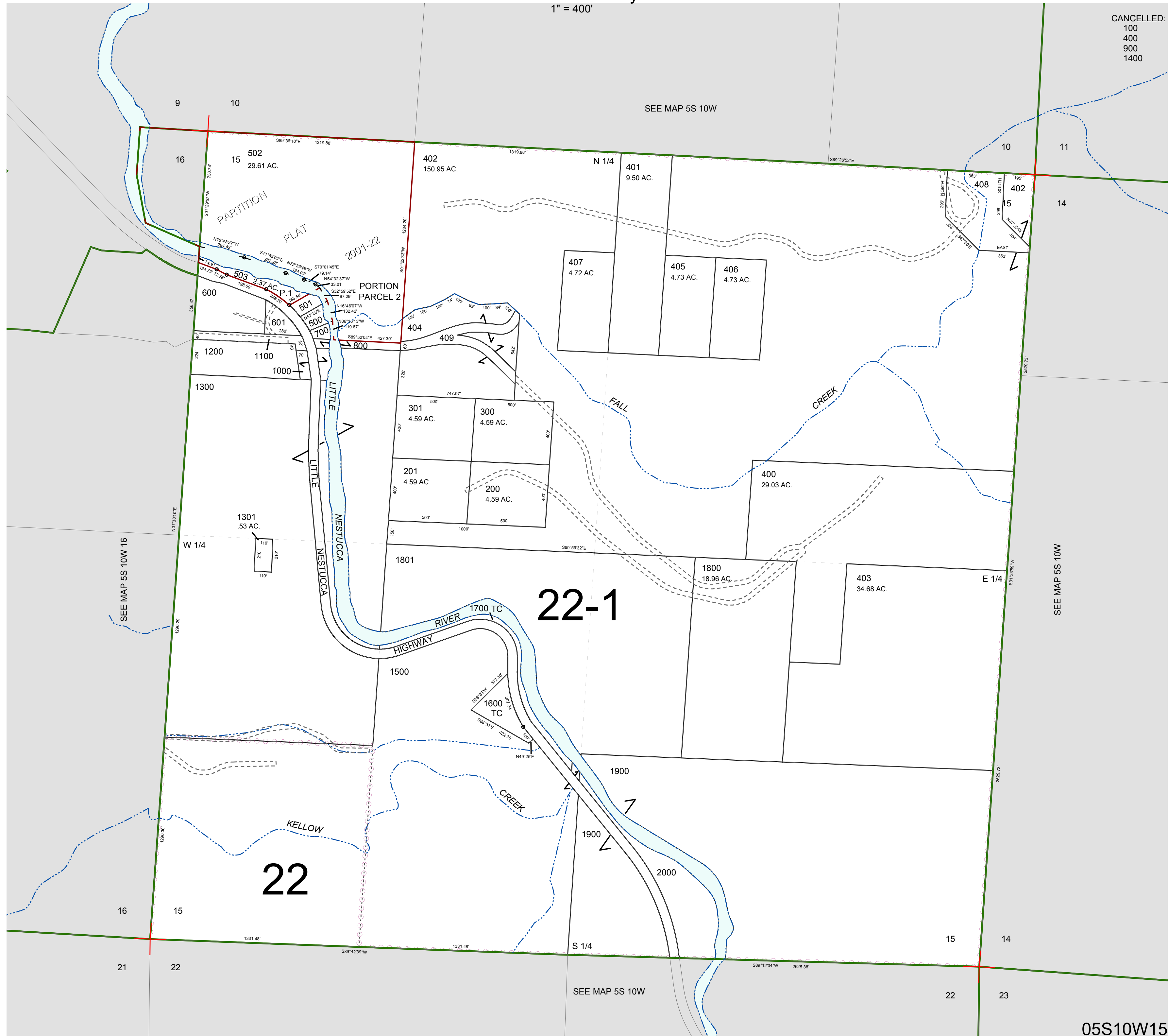
FOR ASSESSMENT AND TAXATION ONLY, NOT SUITABLE FOR LEGAL, ENGINEERING, OR SURVEY PURPOSES

SECTION 15 T.5S. R.10W. W.M.
Tillamook County

1" = 400'

05S10W15

CANCELLED:
100
400
900
1400



05S10W15
REVISED 6/16/17, WS