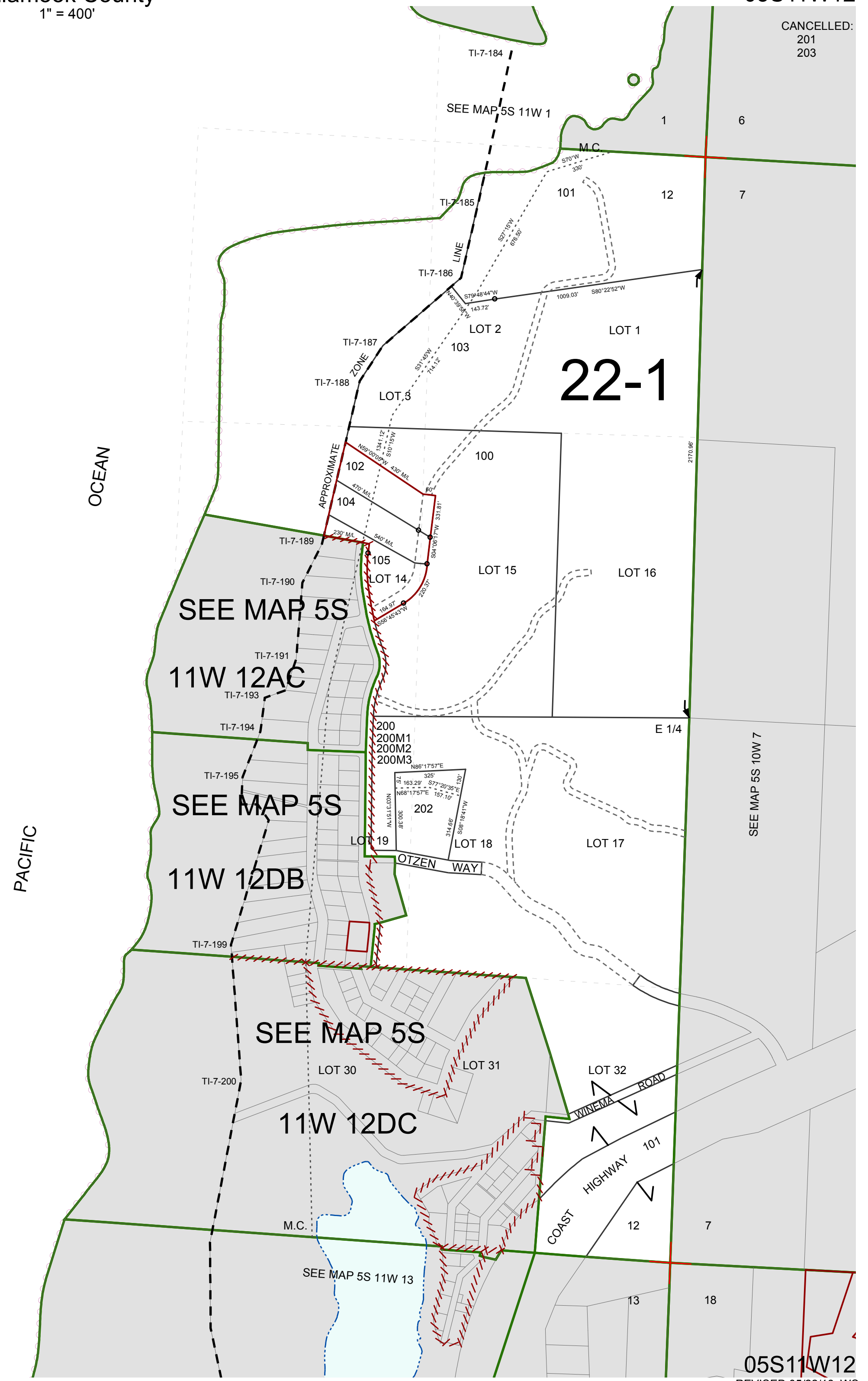


FOR ASSESSMENT AND TAXATION ONLY, NOT SUITABLE FOR  
LEGAL, ENGINEERING, OR SURVEY PURPOSES

SECTION 12 T.5S. R.11W. W.M.  
Tillamook County  
1" = 400'

05S11W12

CANCELLED:  
201  
203



05S11W12

REVISED 05/22/18, WS