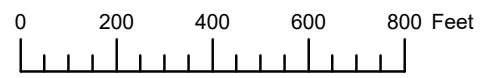


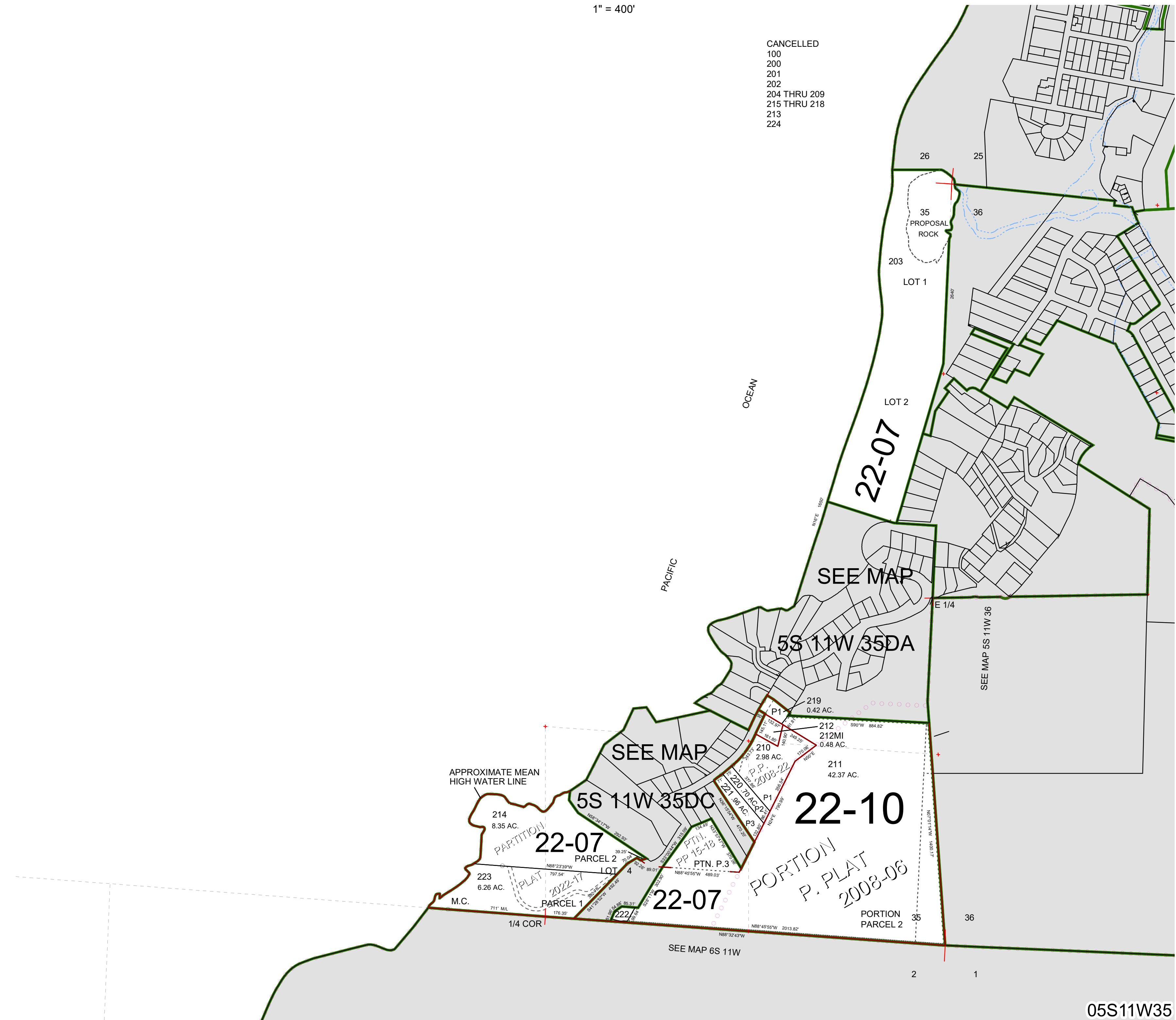
THIS MAP WAS PREPARED FOR ASSESSMENT PURPOSE ONLY



SECTION 35 T.5S. R.11W. W.M.  
TILLAMOOK COUNTY  
1" = 400'

05S11W35

- CANCELLED
- 100
- 200
- 201
- 202
- 204 THRU 209
- 215 THRU 218
- 213
- 224



05S11W35

Revised 12/01/22, WS