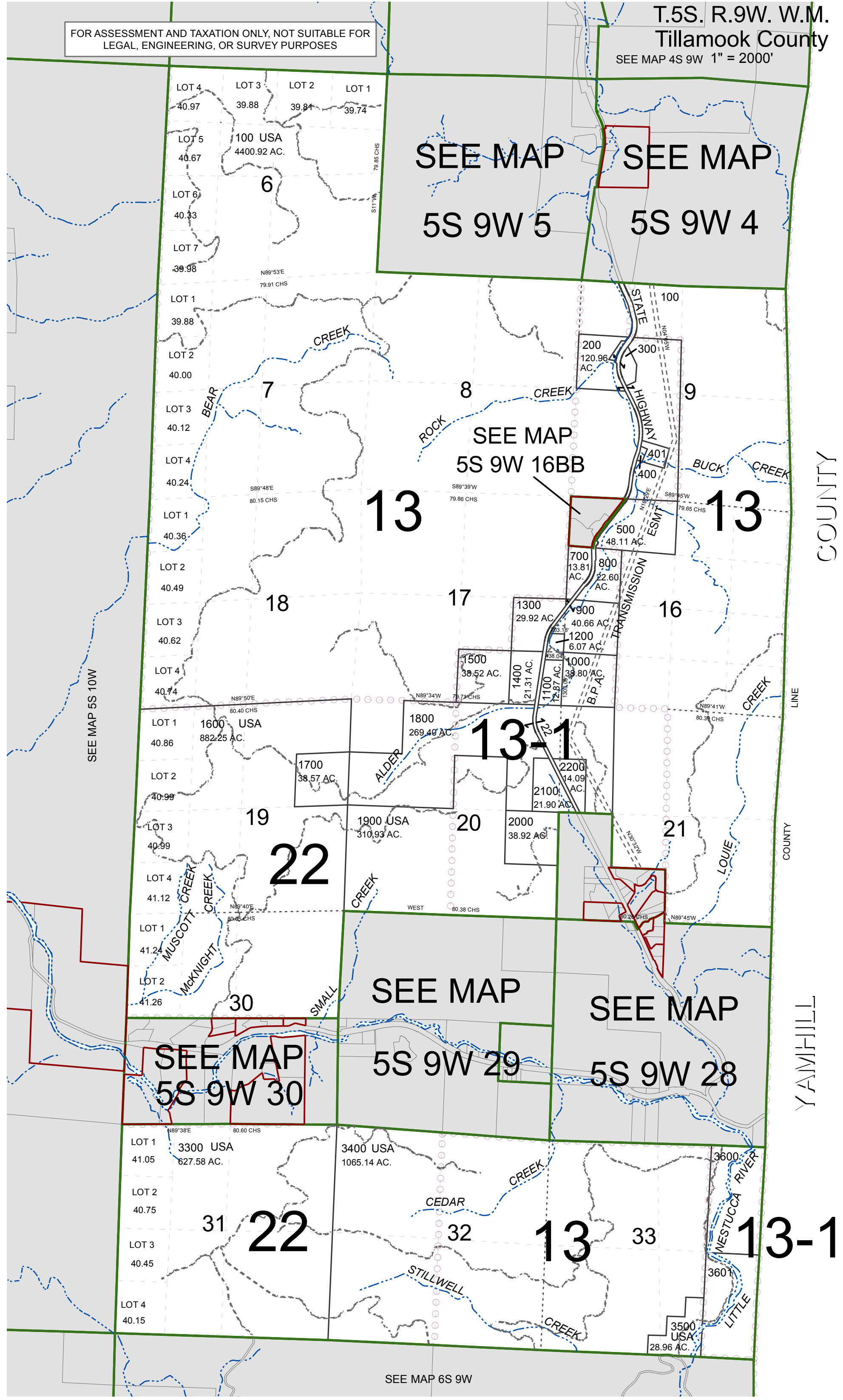


FOR ASSESSMENT AND TAXATION ONLY, NOT SUITABLE FOR LEGAL, ENGINEERING, OR SURVEY PURPOSES

T.5S. R.9W. W.M.
Tillamook County
SEE MAP 4S 9W 1" = 2000'

05S09W

- CANCELLED:
- 600
 - 2300
 - 2400
 - 2500 THRU 2505
 - 2600
 - 2601
 - 2602
 - 2700
 - 2701
 - 2800
 - 2900
 - 3000
 - 3001
 - 3100
 - 3200 THRU 3209



05S09W
REVISED 6/16/17, WS