

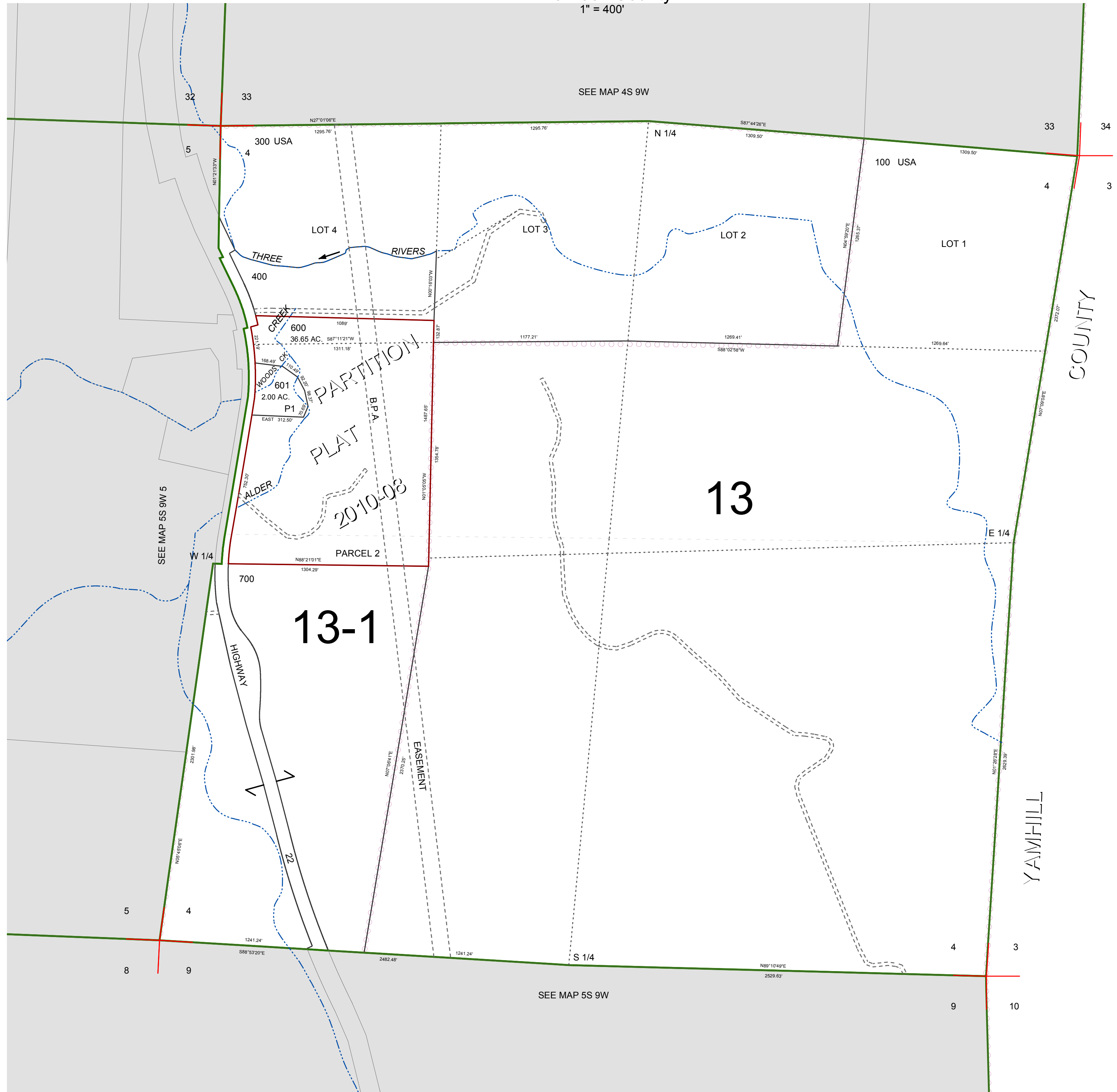
FOR ASSESSMENT AND TAXATION ONLY, NOT SUITABLE FOR LEGAL, ENGINEERING, OR SURVEY PURPOSES

SECTION 4 T.5S. R.9W. W.M.
Tillamook County

1" = 400'

05S09W04

CANCELLED:
401
500
590
200



YAMHILL COUNTY

05S09W04
REVISED 6/16/17, WS