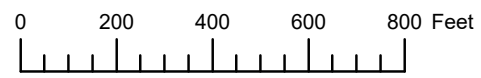


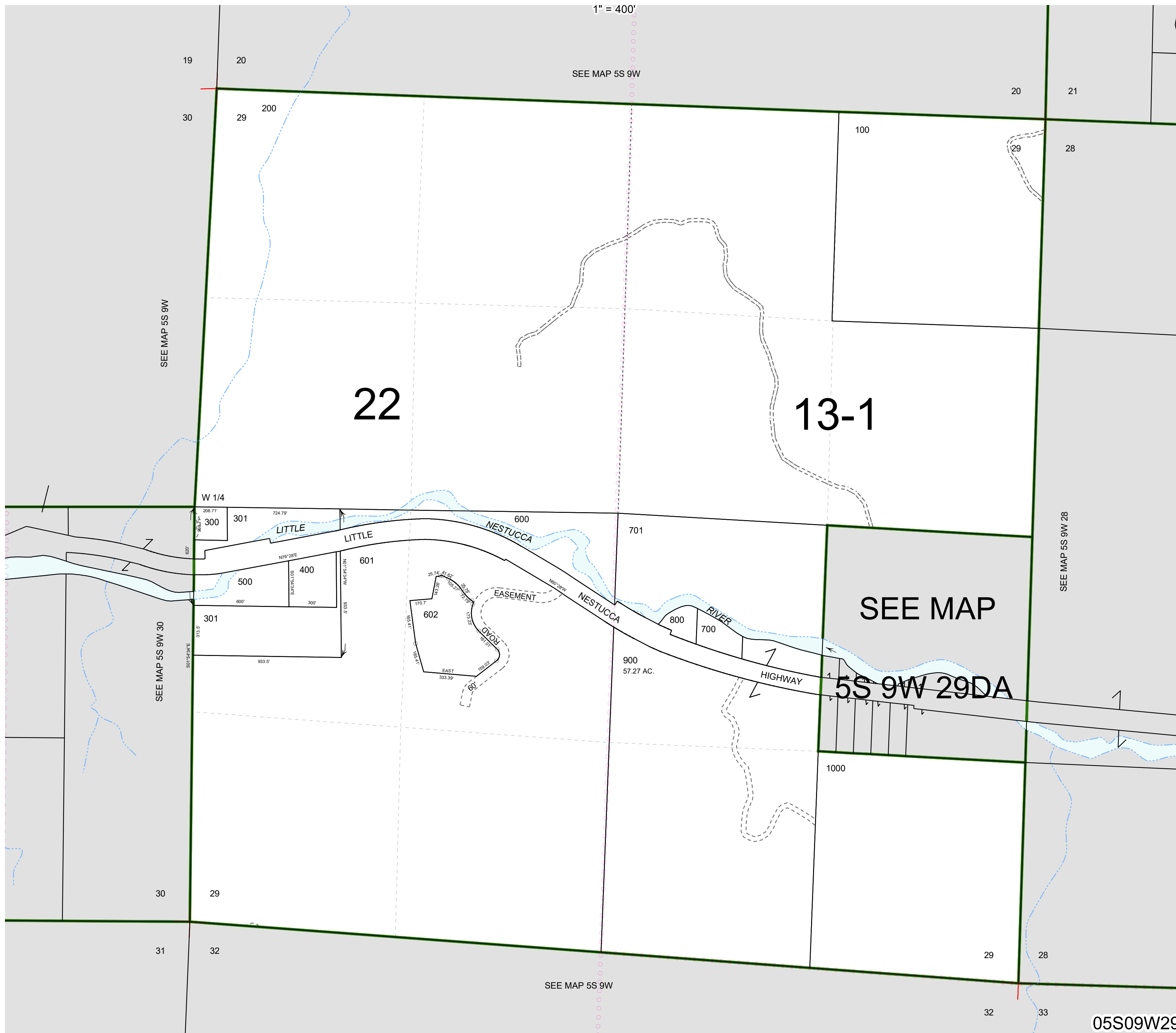
THIS MAP WAS PREPARED FOR ASSESSMENT PURPOSE ONLY



SECTION 29 T.5S. R.9W. W.M.
TILLAMOOK COUNTY

05S09W29

1" = 400'



SEE MAP 5S 9W

SEE MAP 5S 9W

SEE MAP 5S 9W 28

SEE MAP 5S 9W 30

SEE MAP 5S 9W

SEE MAP
5S 9W 29DA

05S09W29

Revised 4/28/23, WS