

FOR ASSESSMENT AND TAXATION ONLY. NOT SUITABLE FOR  
LEGAL, ENGINEERING, OR SURVEY PURPOSES

N.E. 1/4 S.E. 1/4 SEC. 29 T.5S. R.9W. W.M.  
Tillamook County

1" = 100'

05S09W29DA

CANCELLED:

SEE MAP 5S 9W 29

CE 1/16

100

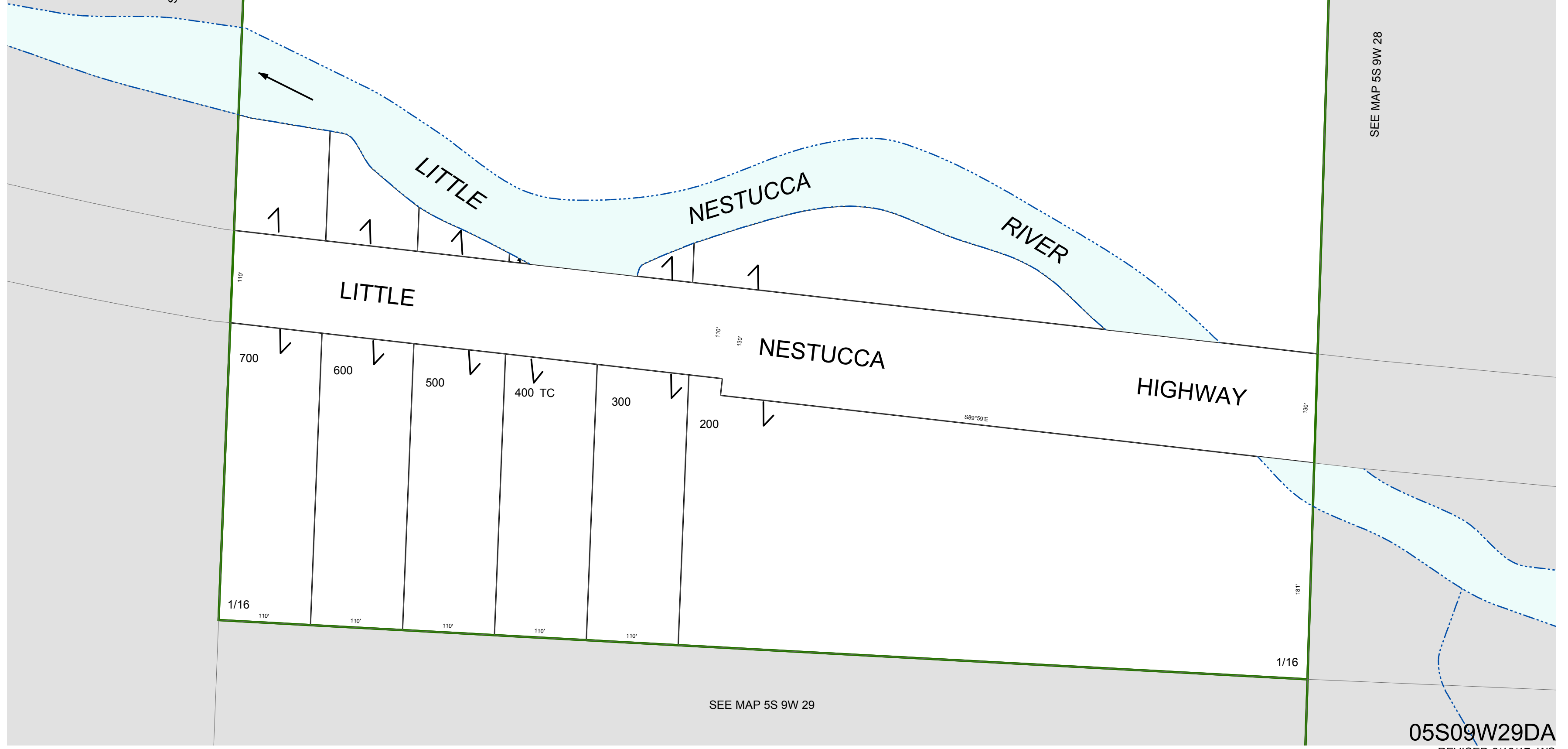
E 1/4

13-1

SEE MAP 5S 9W 29

NORTH

SEE MAP 5S 9W 28



SEE MAP 5S 9W 29

05S09W29DA

REVISED 6/16/17, WS