

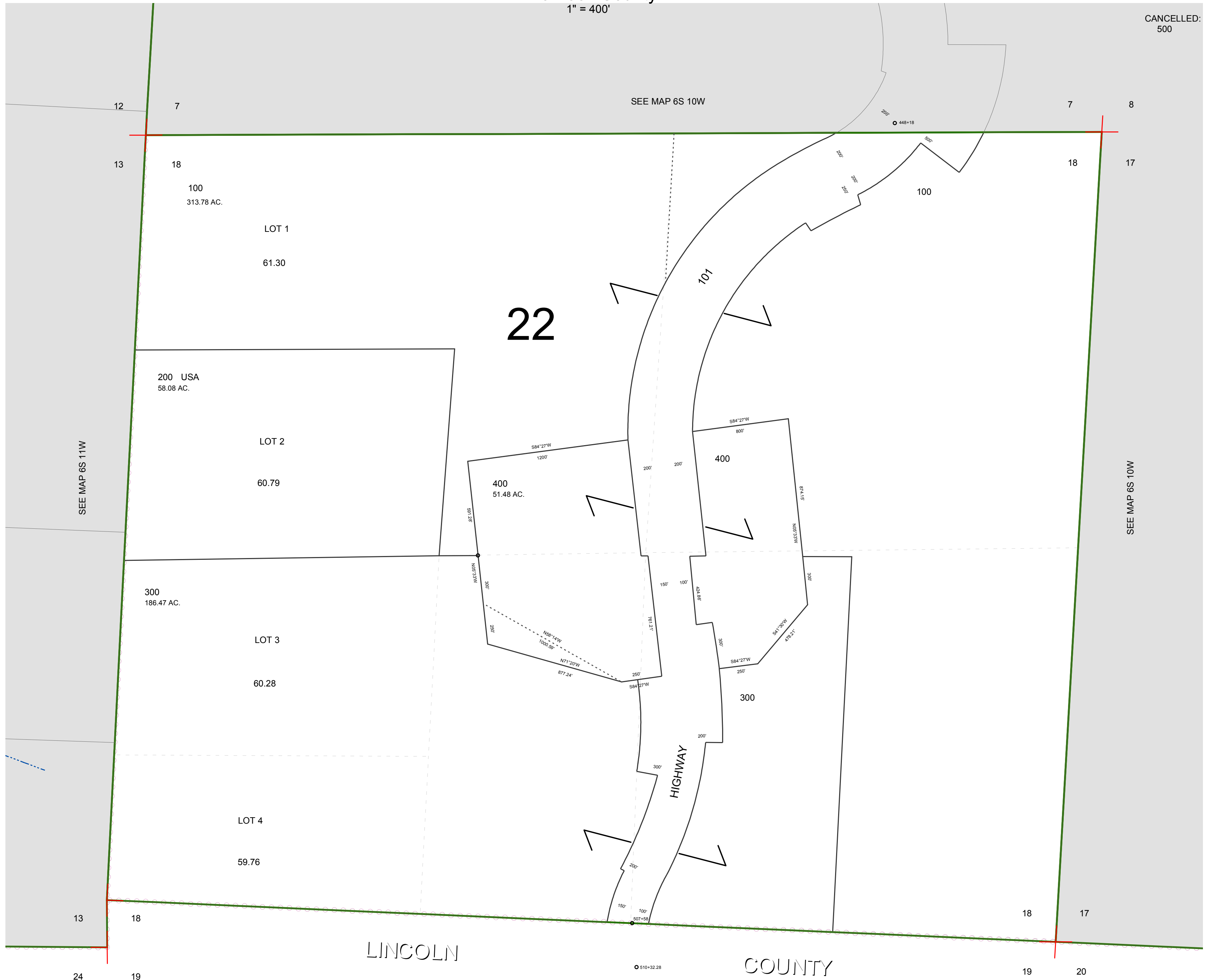
FOR ASSESSMENT AND TAXATION ONLY, NOT SUITABLE FOR LEGAL, ENGINEERING, OR SURVEY PURPOSES

SECTION 18 T.6S. R.10W. W.M.  
Tillamook County

1" = 400'

06S10W18

CANCELLED:  
500



06S10W18  
REVISED 6/16/17, WS