



Source: FHWA

July 1, 2022

Cape Meares Road Relocation

Construction Activities & Upcoming Work

Excavation, timber slash and brush removal, and surveying will continue next week. There will be no work on Monday, July 4th. Heavy equipment is working throughout the project. There is no public access within project limits. The fixed construction completion date is October 31, 2023.

ROAD CLOSURES

Current road closure points will remain in effect on Bayocean Road near the Cape Meares Lighthouse, and approximately 0.5 miles south of the Lighthouse. Construction will have minimal impact on public traffic as it is closed to through traffic. Please be advised that project limits are outside the gate on Cape Meares Loop coming south from Bayocean Road. A reader board and Type III Barricades have been installed at this location.

Project Website:

<https://highways.dot.gov/federal-lands/projects/or/tillamook-b780-1>



Excavation station 360.

Source: FHWA

Project Number:
OR TILLAMOOK B780
(1)

FHWA Contact:
John Henderson
john.henderson@dot.gov
360-839-3867

Project Partner:
Tillamook County
Federal Highway
Administration
Western Federal Lands
Highway Division

Contractor:
M.A. DeAtley Construction, Inc.
829 Evans Rd,
Clarkston, WA 99403

Notice to Proceed:
December 6, 2021.

Fixed Completion Date:
October 31, 2023



U.S. Department
of Transportation

**Federal Highway
Administration**

Western Federal Lands Highway Division

OR TILLAMOOK B780(1), Cape Meares Road Relocation

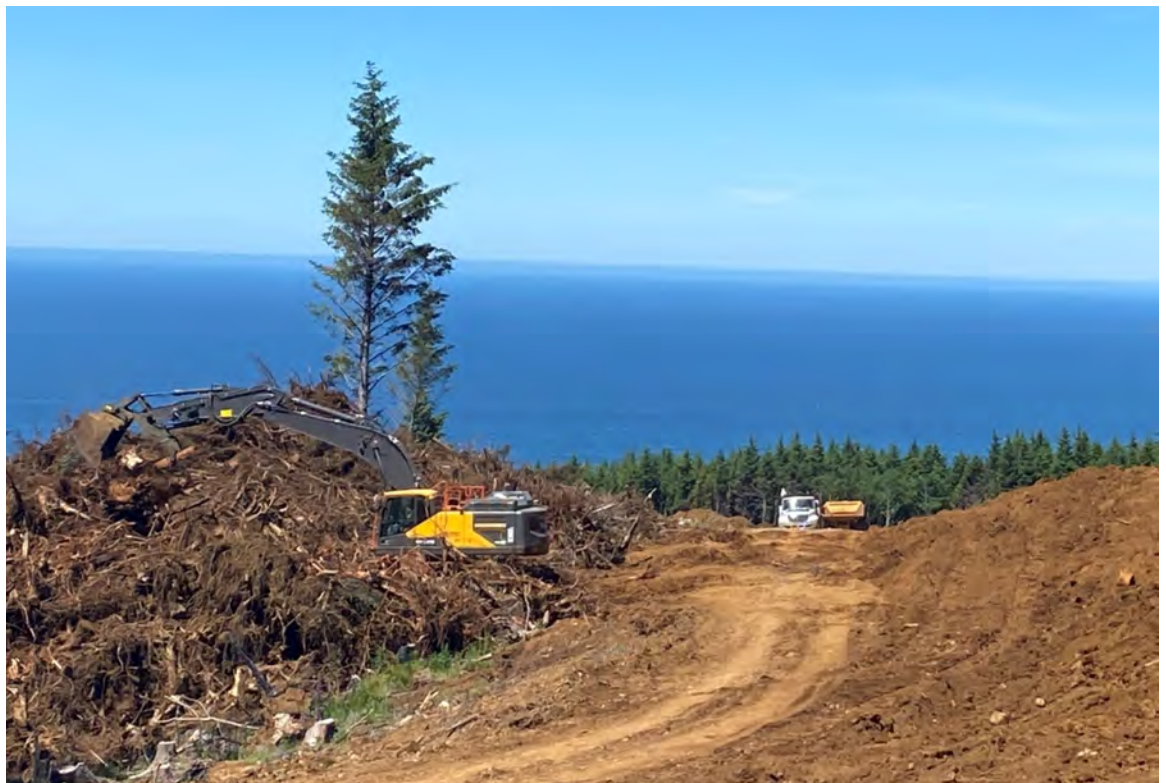
Pictures



**Excavation at sta-
tion 355.**

Source: FHWA

**Excavator piling
timber slash and
brush**



Source: FHWA

OR TILLAMOOK B780(1), Cape Meares Road Relocation

Pictures



**Excavator clearing
timber slash and
brush by the South
entrance**

Source: FHWA

**Equipment working
at the waste site**



Source: FHWA

OR TILLAMOOK B780(1), Cape Meares Road Relocation

Map

Project location is in
Tillamook County,
Oregon



Source: Google

Reader board on Bayshore Drive located north of the project entrance displaying messages :
“ROAD CLOSED AHEAD”
“NO HIKING ACCESS”
“NO THROUGH TRAFFIC”
“ACCESS FROM OCEANSIDE”

Type III barricades are installed further up the road.



Source: FHWA